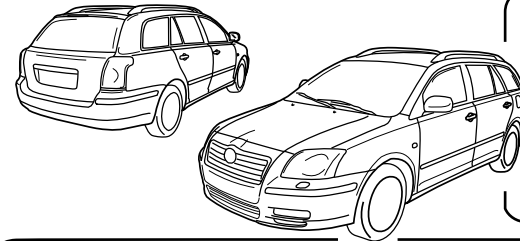




Vehicle
Avensis

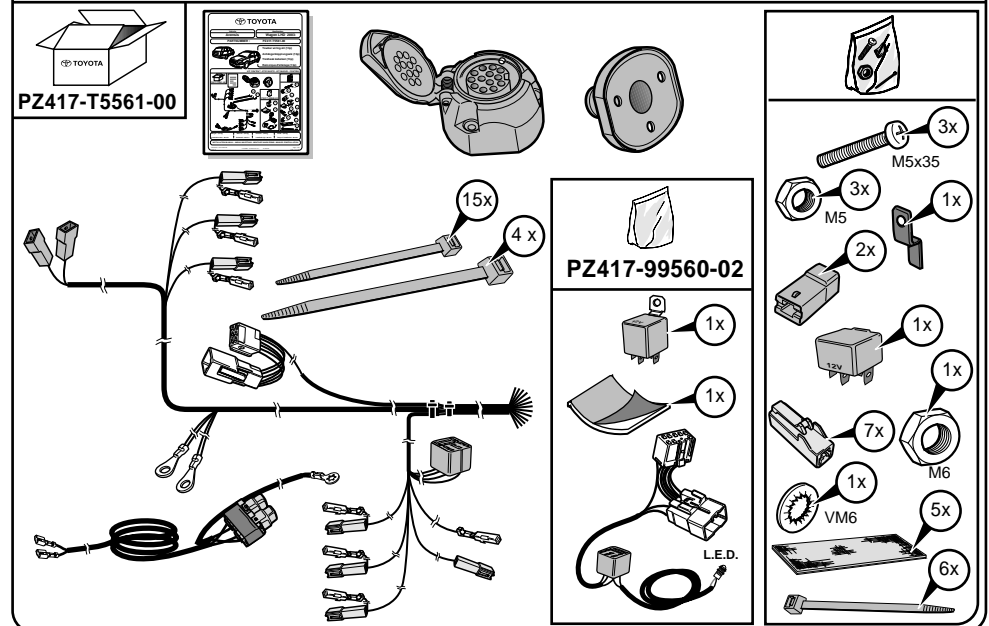
Application
Wagon LHD 2003-

PARTNUMBER : PZ417-T5561-00



Towbar wiring-kit (13p)
Anhängerkupplungsatz (13p)
Trekhaak kabelset (13p)
Remorque d'attelage (13p)

KIT CONTENT - STÜCKLISTE - KIT INHOUD - CONTENU



Weight : 1,84 kg

Gewicht : 1,84 kg

Gewicht : 1,84 kg

Poids : 1,84 kg

Installation time : 90 min.

Anbauezeit : 90 min.

Installatie tijd : 90 min.

Temps d' installation : 90 min.

INSTALLATION MANUAL - ANBAU ANLEITUNG - MONTAGE HANDLEIDING - MANUEL D'INSTALLATION

PARTNAME : Towbar wiring-kit / Anhängerkuppungsatz
Trekhaak kabelset / Remorque d'attelage

PARTNUMBER : PZ417-T5561-00

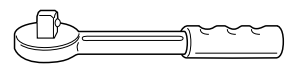
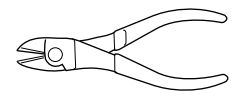
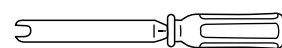
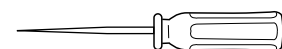
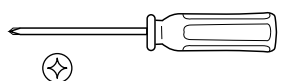
APPLICATION - ANWENDUNG - APPLICATIE - APPLICATION

MODELCODE Avensis Wagon 2003- : **T25*L-AW*E*W

| ☺ VEHICLE OPTION - FAHRZEUG OPTION - VOERTUIG OPTIE - OPTION VEHICULE | ☹ VEHICLE OPTION - FAHRZEUG OPTION - VOERTUIG OPTIE - OPTION VEHICULE |
|---|---|
| Not applicable Nicht zutreffend Niet van toepassing Non applicable | Not applicable Nicht zutreffend Niet van toepassing Non applicable |
| ACCESSORY - ZUBEHÖR - ACCESSOIRE- ACCESSOIRE | ACCESSORY - ZUBEHÖR - ACCESSOIRE- ACCESSOIRE |
| Not applicable Nicht zutreffend Niet van toepassing Non applicable | Not applicable Nicht zutreffend Niet van toepassing Non applicable |

| SAFETY PRECAUTION - SICHERHEITSMABNAHME - VEILIGHEIDSVORSCHRIFTEN - PRECAUTIONS DE SECURITE |
|---|
| Not applicable Nicht zutreffend Niet van toepassing Non applicable |

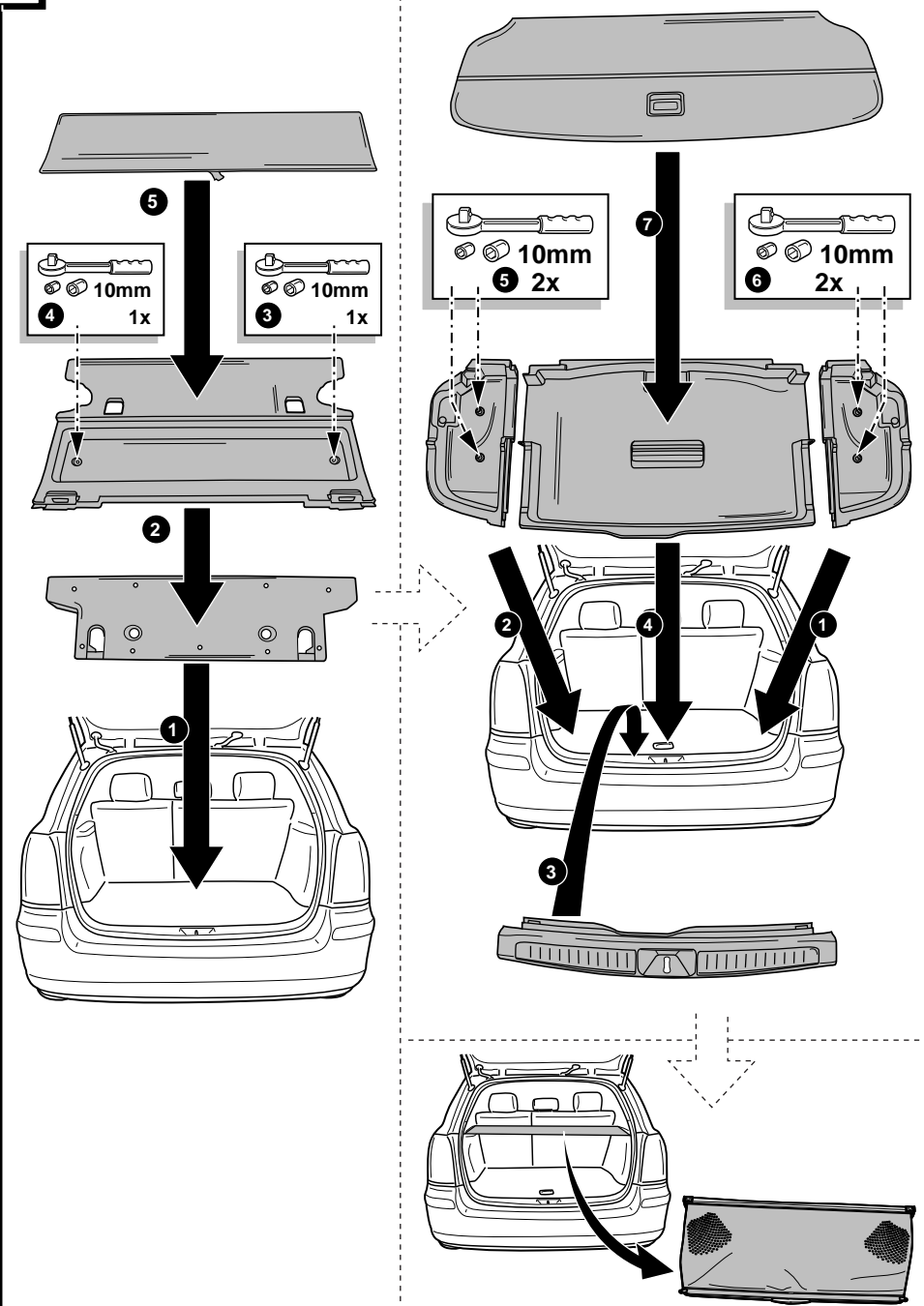
TOOLS - WERKZEUGE - WERKTUIGEN - OUTILS



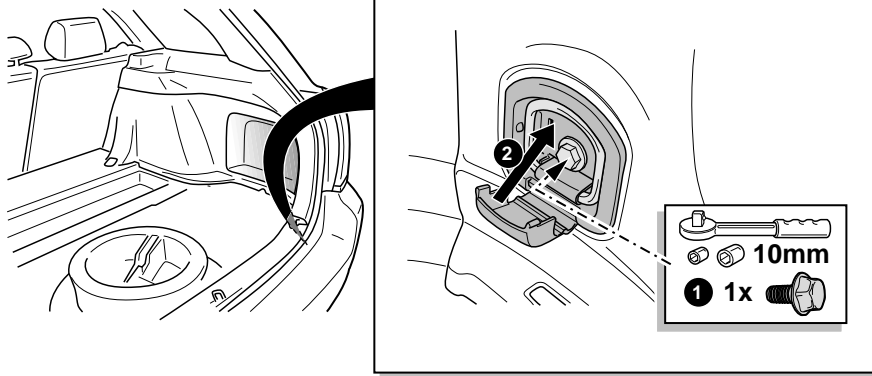
10mm
12mm



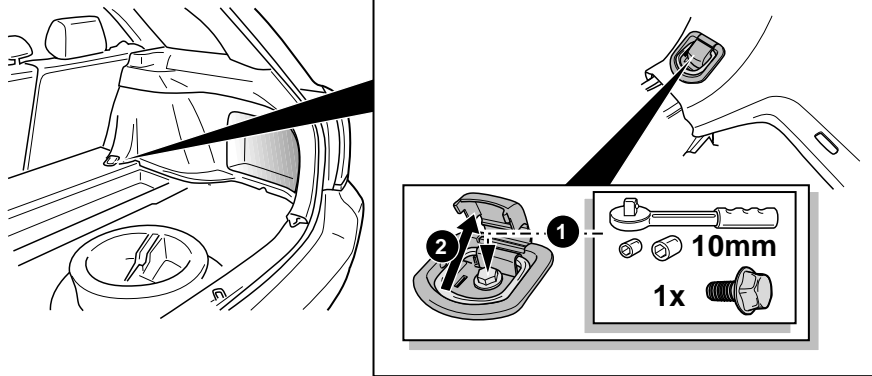
53



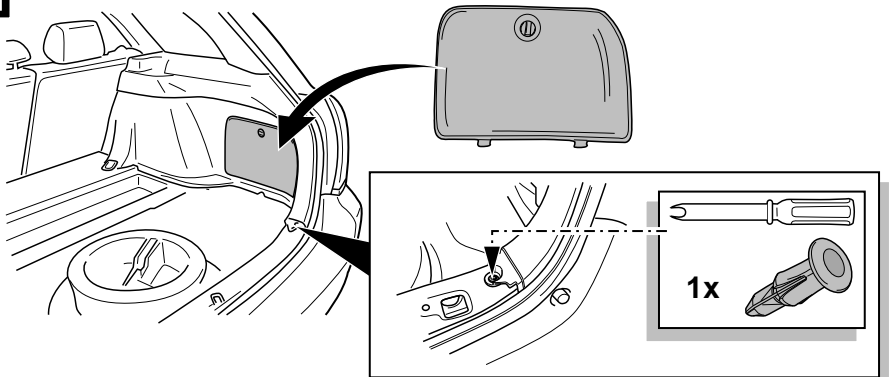
50



51



52



*Number of installation steps : 53

*Aantal installatie stappen: 53

*Zahl der Einbauschritte: 53

*Nombre des démarches d'installation: 53

CRITICAL OPERATIONS - SICHERHEITSMÄSSIGE - KRITIEKE HANDELINGEN - OPERATIONS DÉLICATE

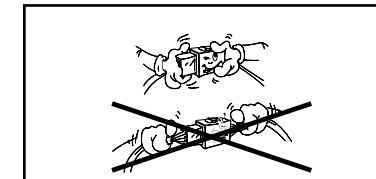
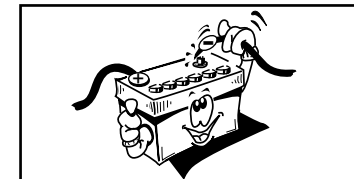
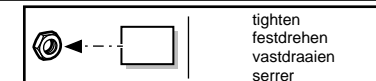
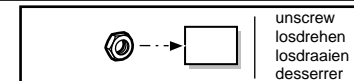
Picture: 18, 19

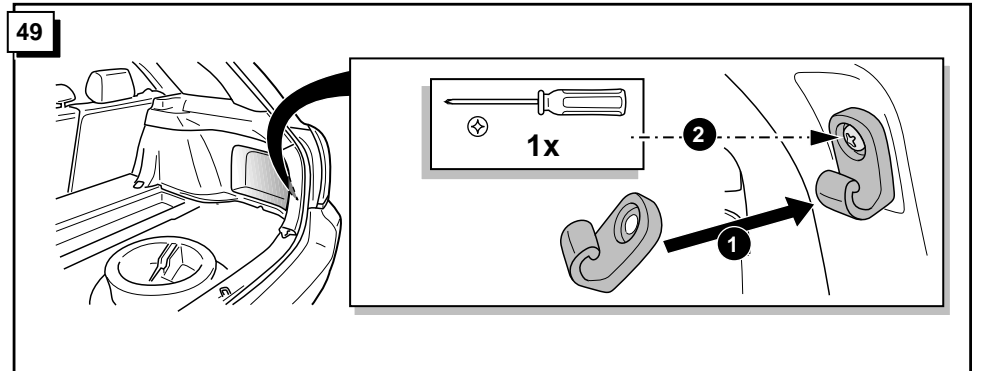
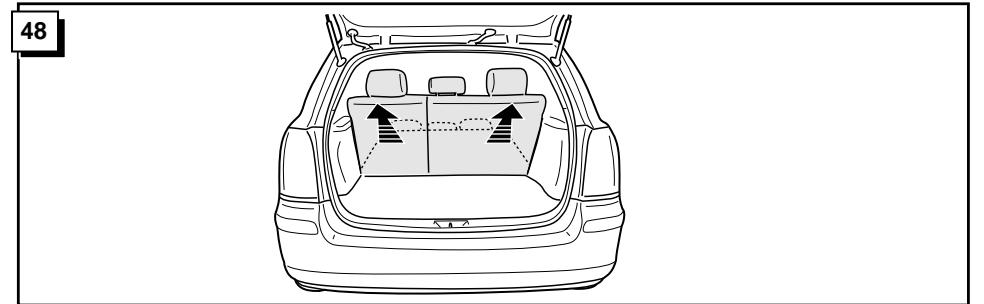
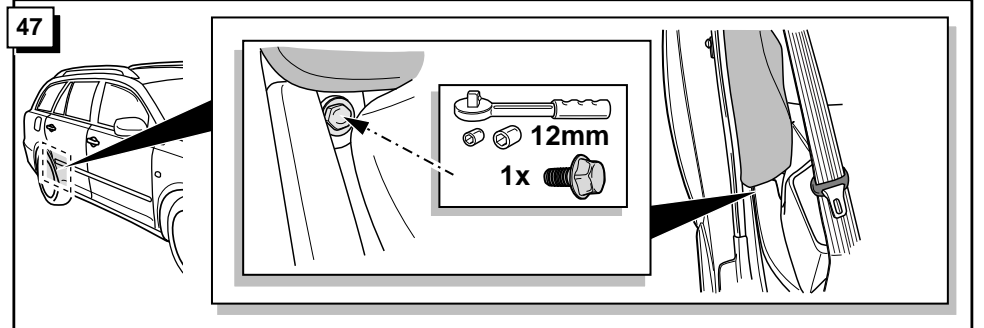
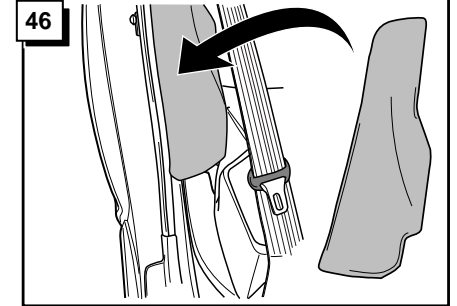
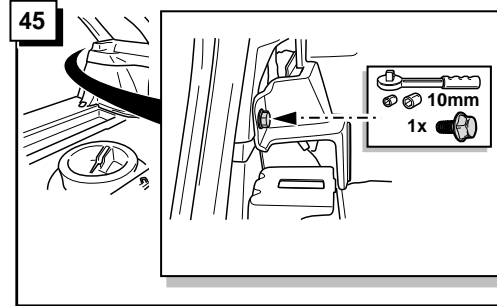
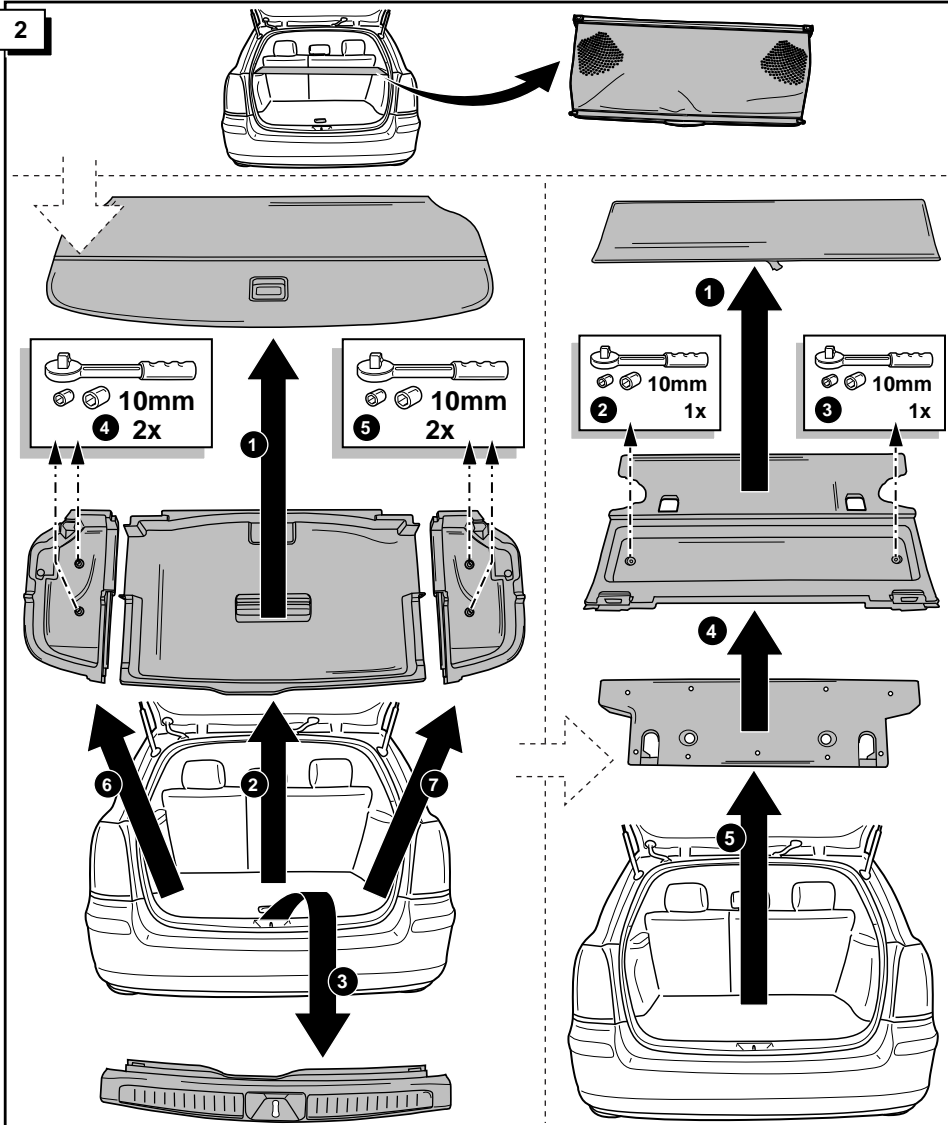
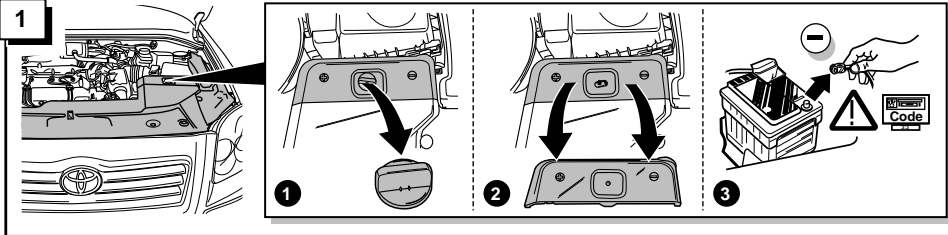
Abbildung: 18, 19

Figuur: 18, 19

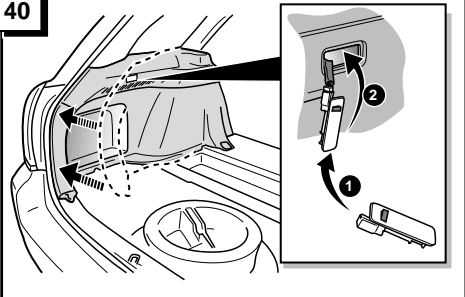
Illustration: 18, 19

- * Modifications of spanner jaw size for hexagonal bolts and nuts according to ISO 272 (1990). Please check the respective widths and only use the correct tools.
- * Umstellung der Schlüsselweiten von Sechskantschrauben und Muttern nach ISO 272 (1990). Bitte prüfen Sie die jeweilige Schlüsselweite und verwenden Sie nur das hierzu passende Werkzeug.
- * Omzetting van de sleutelwijdten voor zes-kantschroeven en moeren volgens ISO 272 (1990). Controleert U a.u.b. elke sleutelwijdte en gebruik alleen het hiervoor bestemde gereedschap.
- * Modification de la taille des clefs pour les boulons et écroux hexagonaux conformément à ISO 272 (1990). Veuillez contrôler la largeur respective des clefs et n' employez qu' un outillage approprié.

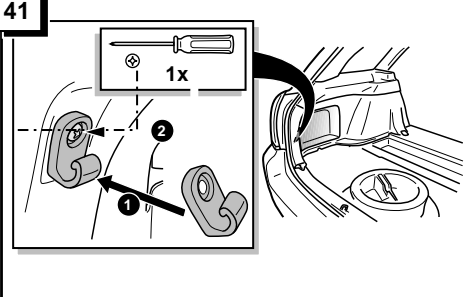




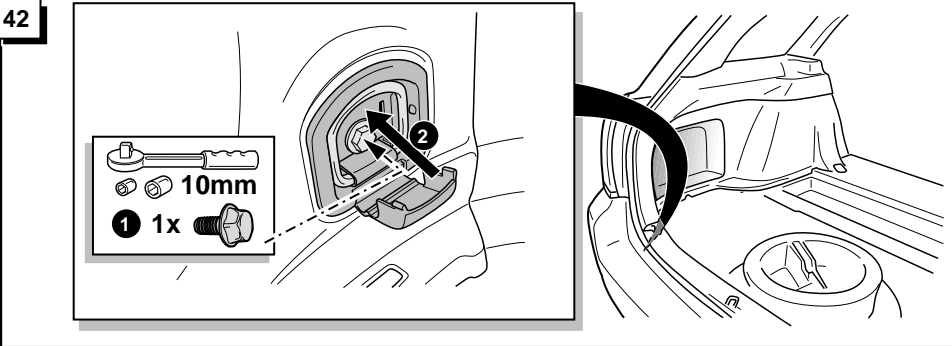
40



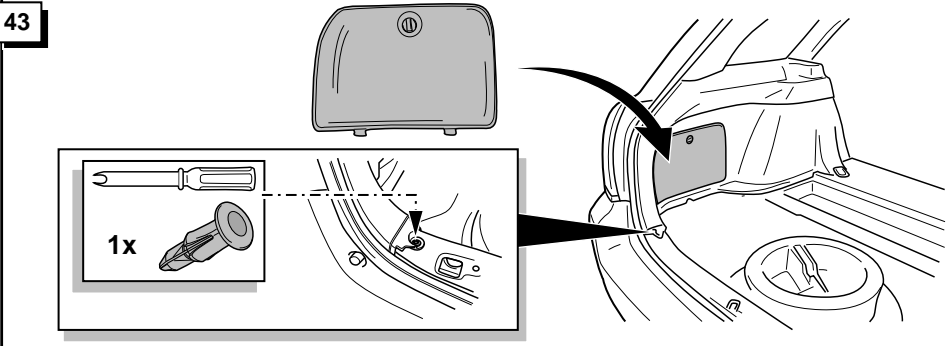
41



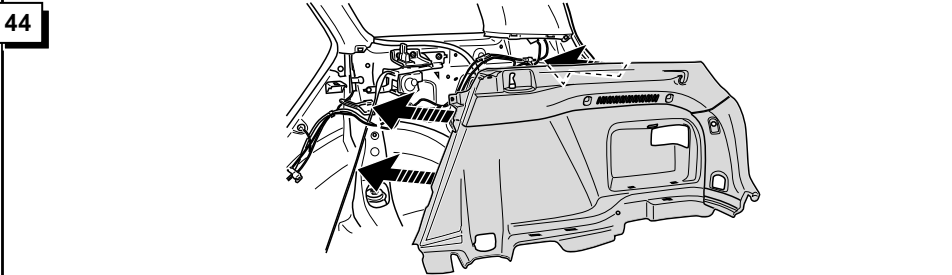
42



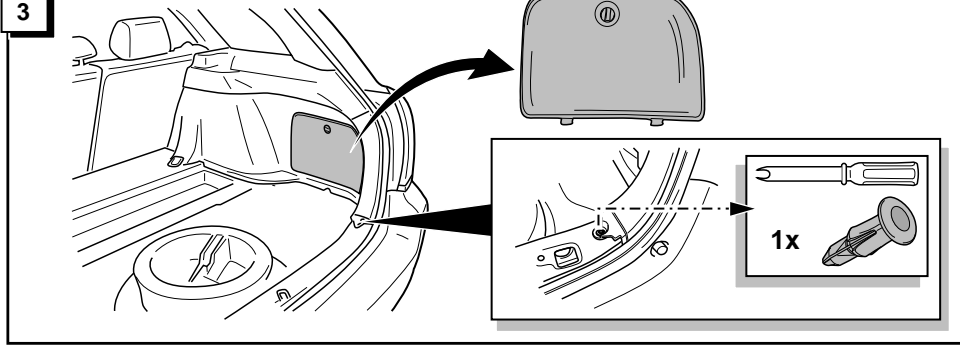
43



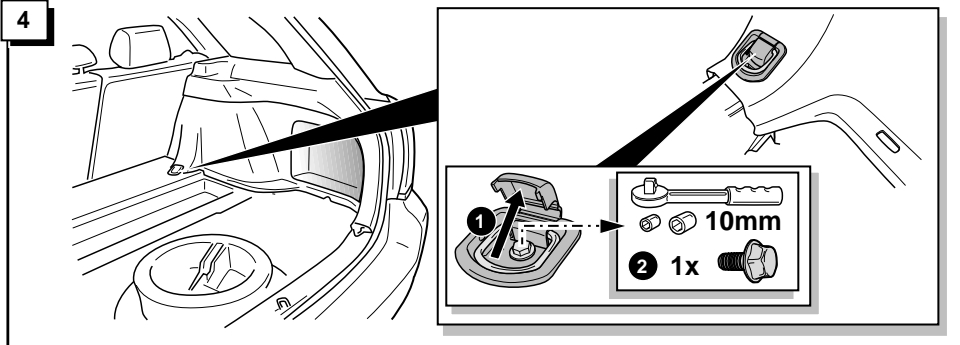
44



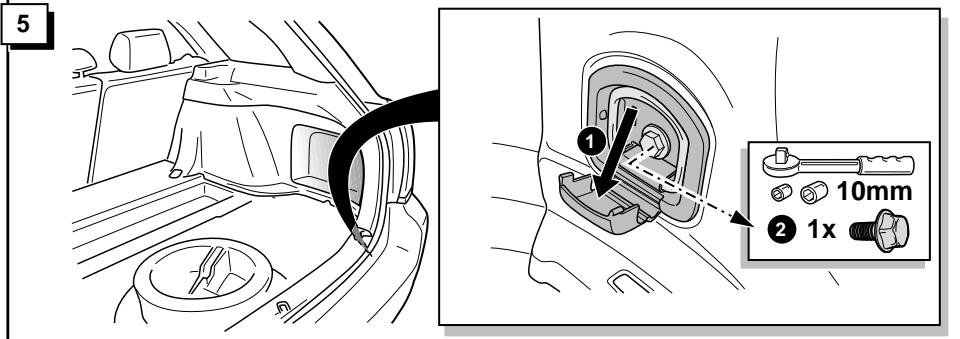
3



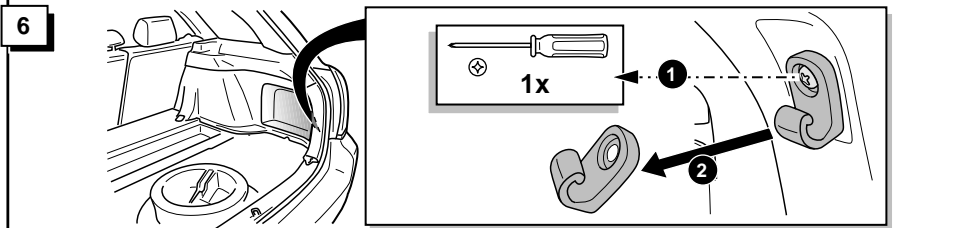
4



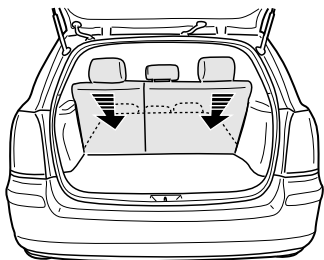
5



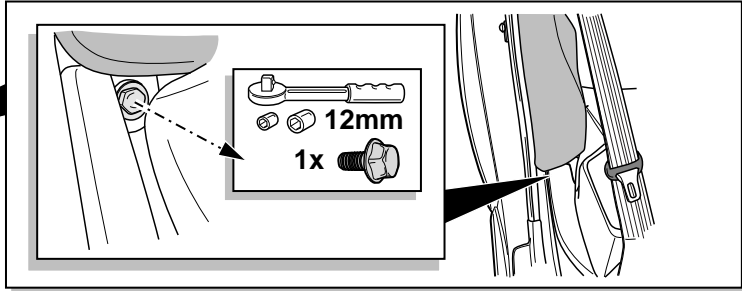
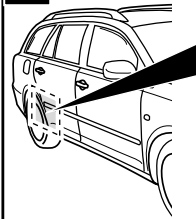
6



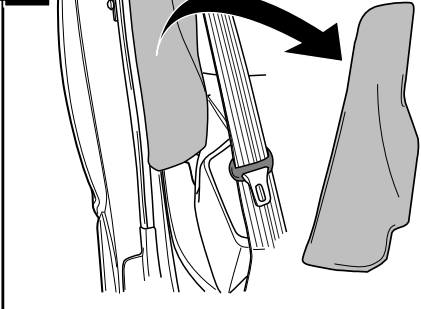
7



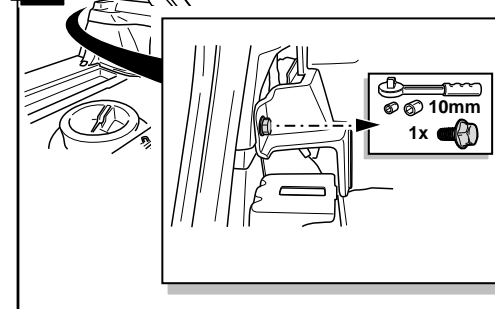
8



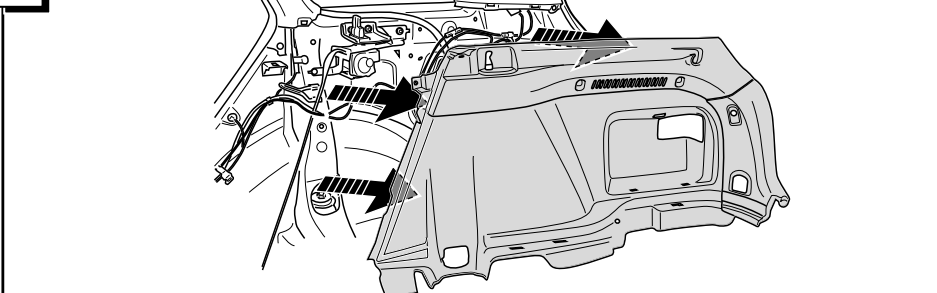
9



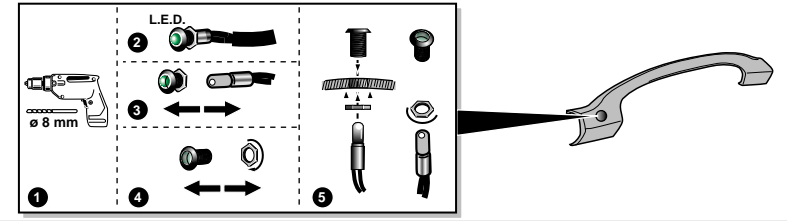
10



11



34



INFO

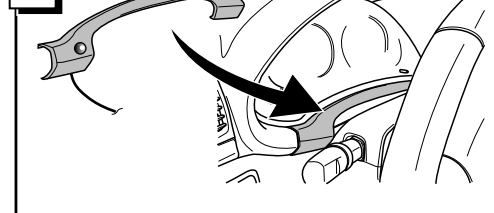
By switching on flashers with the trailer connected (3x21W) or the warning lights (6x21W), the 2nd direction indicator light will flash.

Die Kontrolleuchte blinkt, wenn beim angeschlossenen Anhänger die Blinker (3x21W) oder Warnblinkanlage (6x21W) eingeschaltet sind.

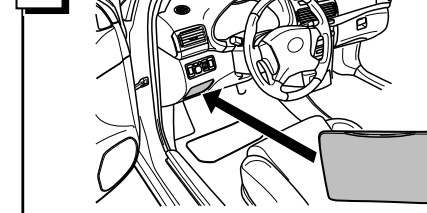
Het controle-lampje knippert wanneer bij aangesloten aanhanger de knipperlichten (3x21W) of waarschuwingslichten (6x21W) ingeschakeld zijn.

Le deuxième témoin de contrôle clignote lorsque les feux de détresses (6X21W) et les clignotants (3X21W) du véhicule sont allumés alors que la caravane/remorque est accouplée au véhicule.

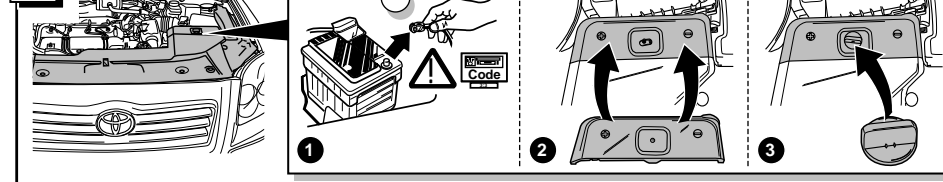
35



36



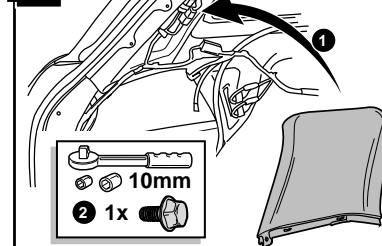
37



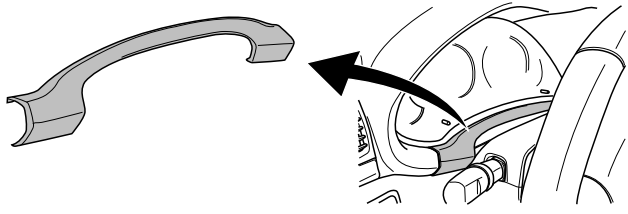
38

**! CHECK FUNCTIONS !
FUNKTIONEN KONTROLLIEREN !
CONTROLEER FUNCTIES !
CONTRÔLER LES FONCTIONS !**

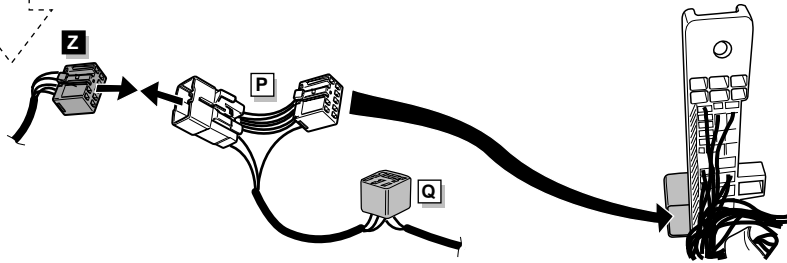
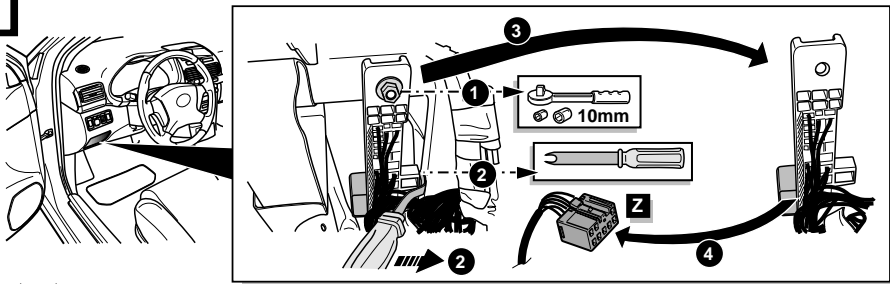
39



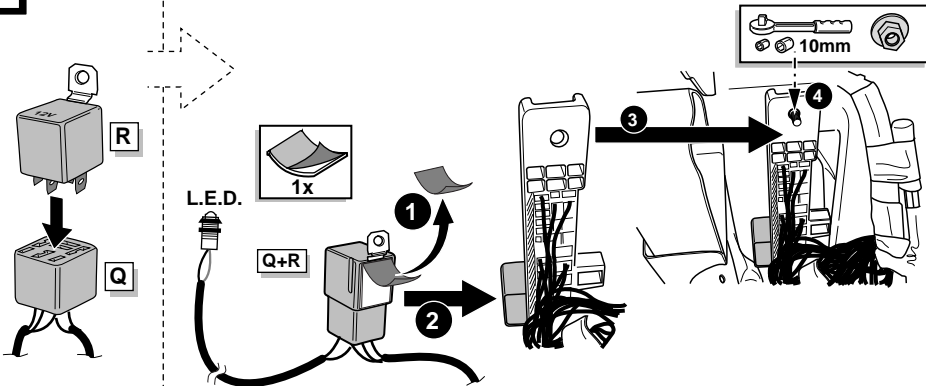
31



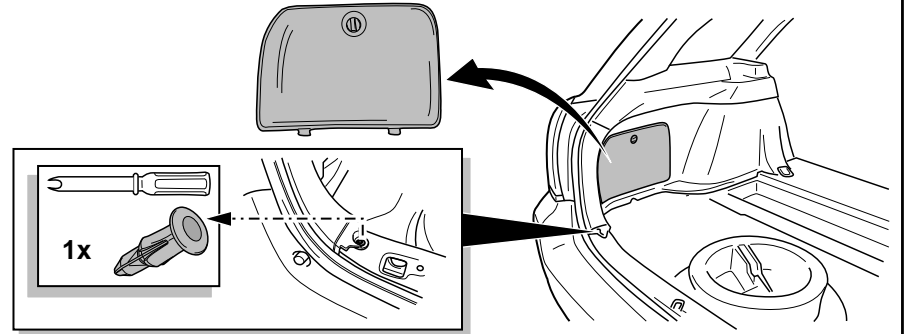
32



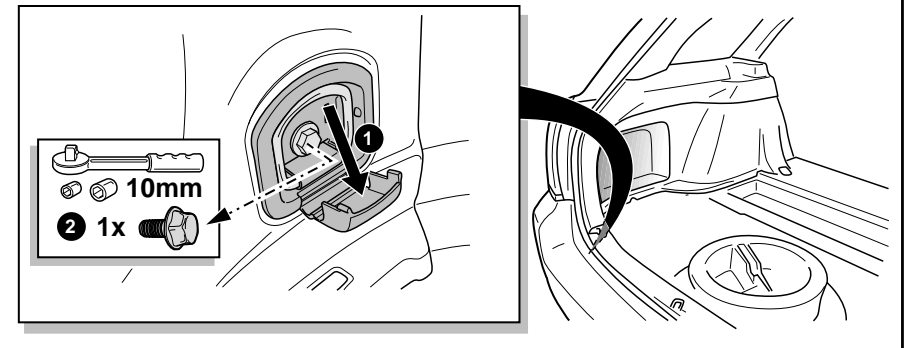
33



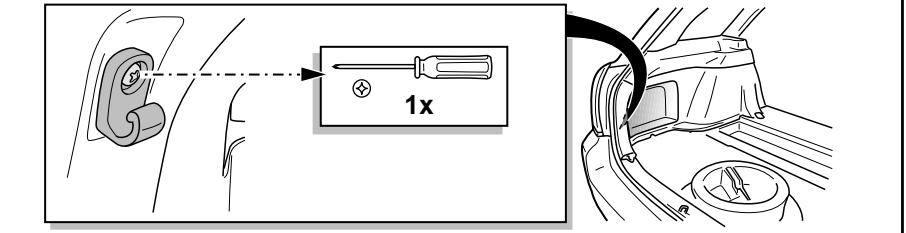
12



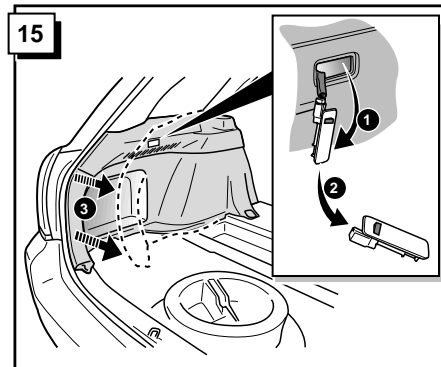
13



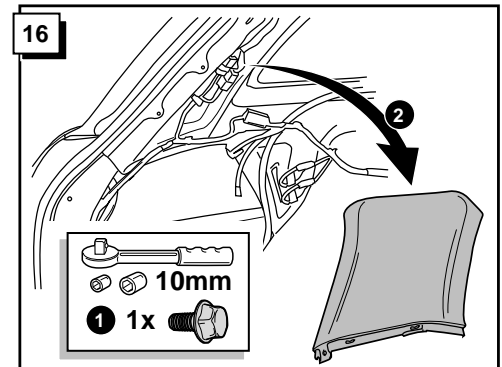
14



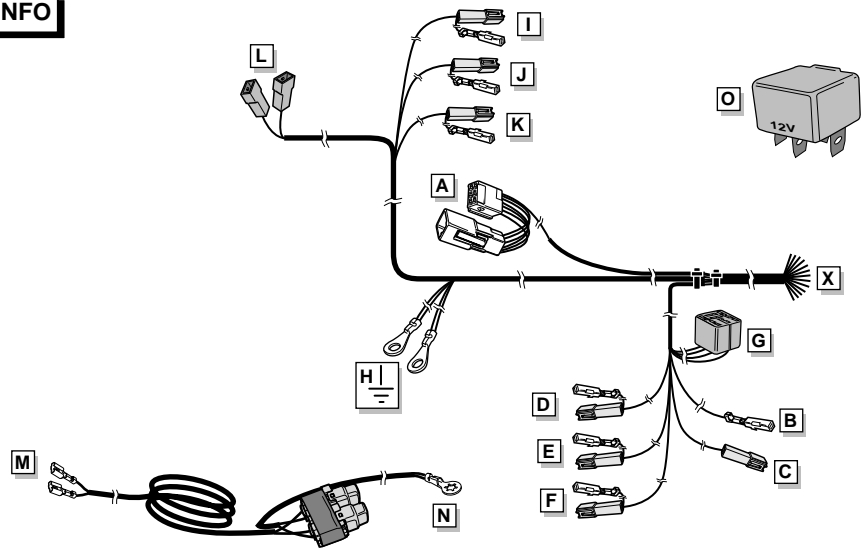
15



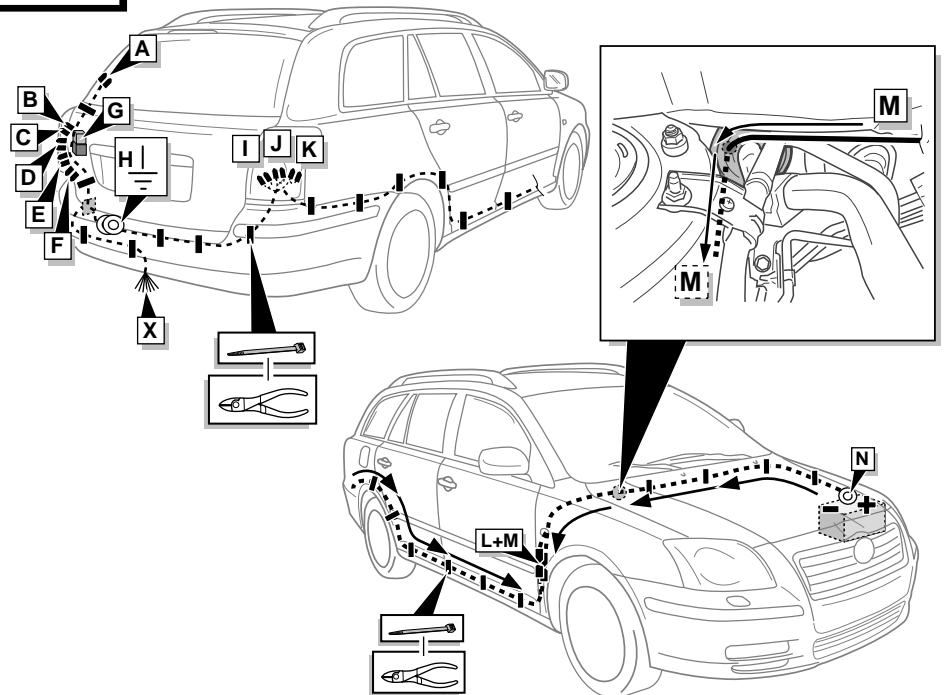
16



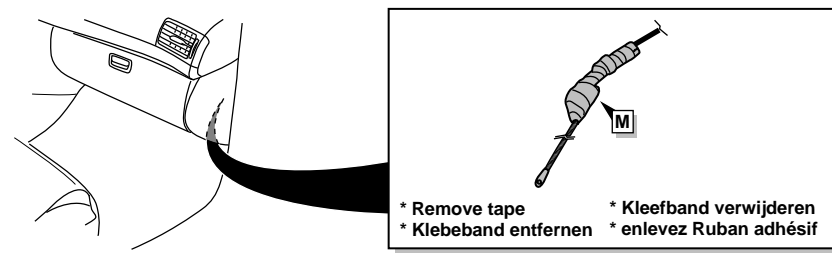
INFO



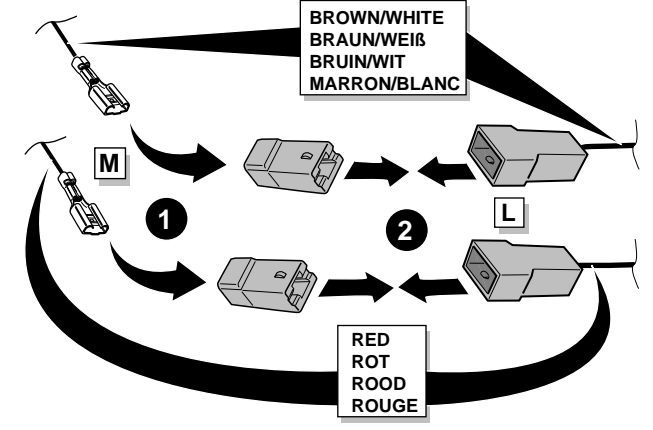
ROUTING



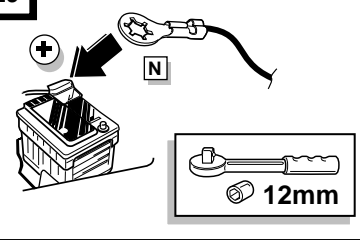
27



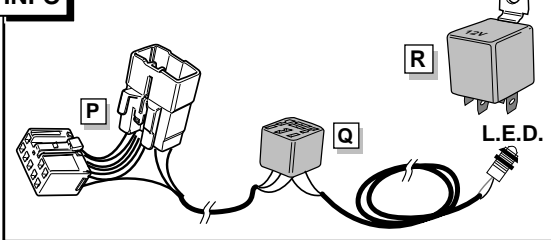
28



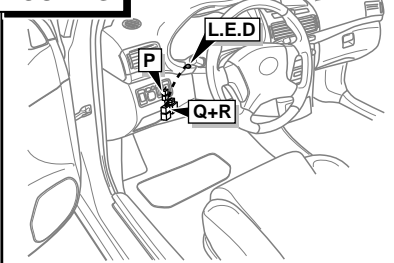
29



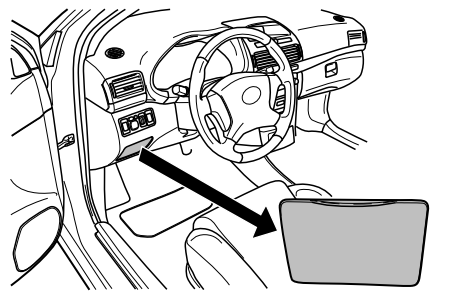
INFO



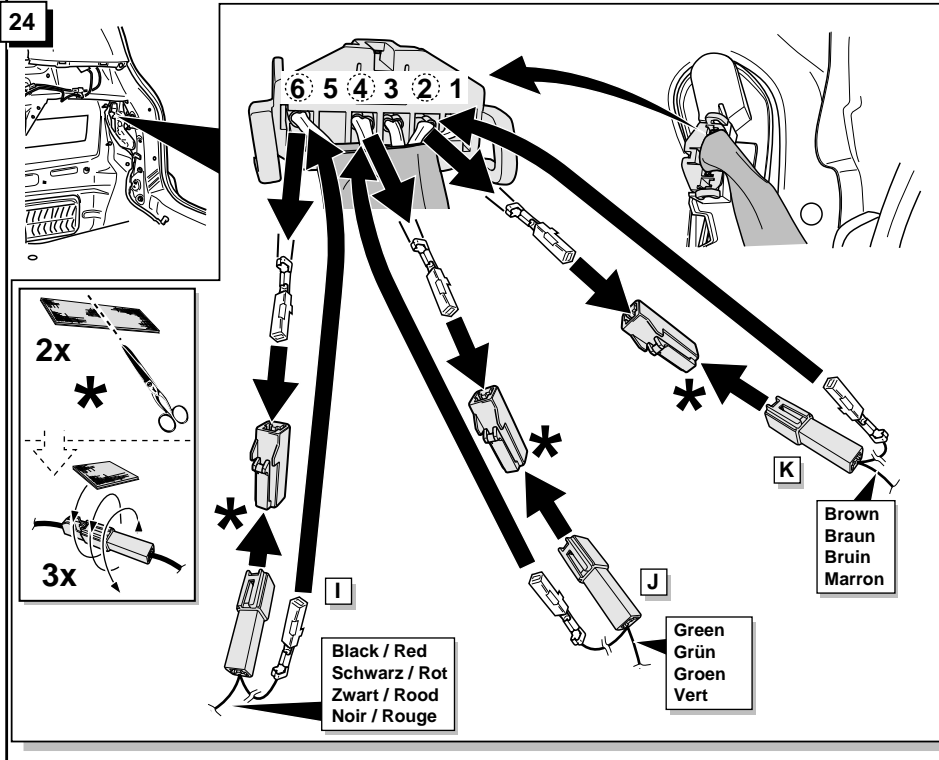
ROUTING



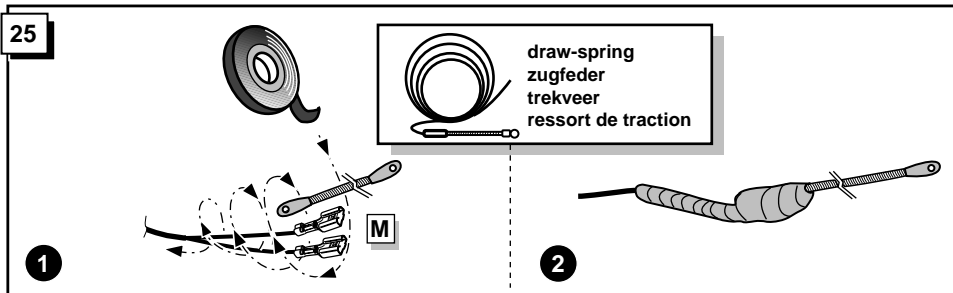
30



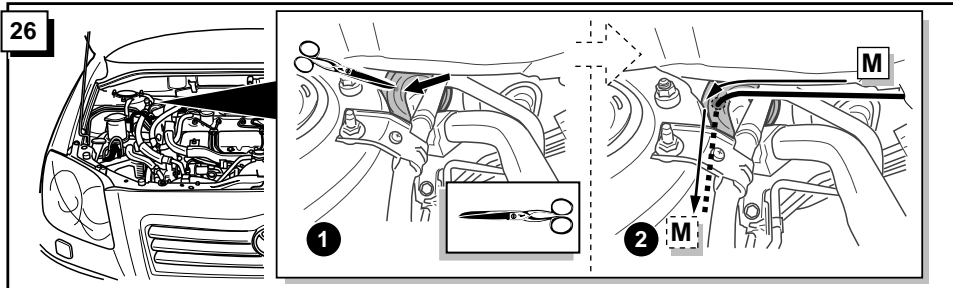
24



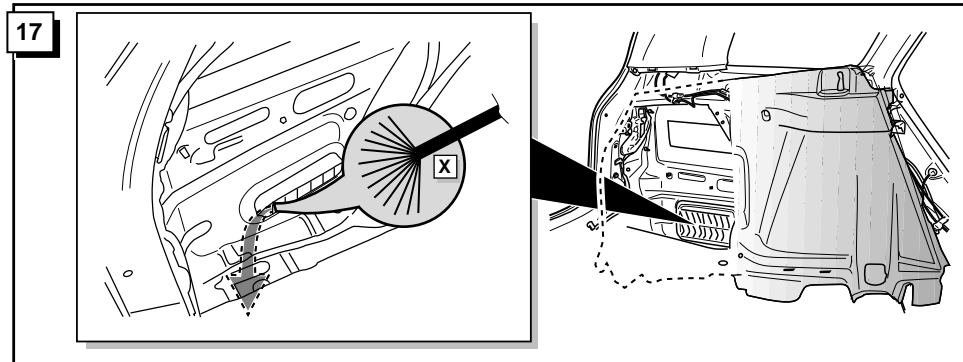
25



26

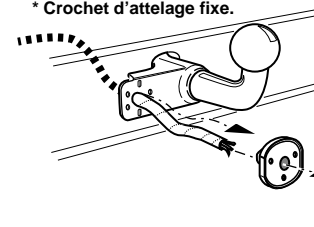


17

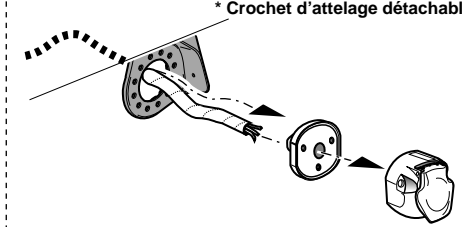


18

- * Fixed hitch type.
- * Feste anhängerkupplung.
- * Vaste trekhaakkoppeling.
- * Crochet d'attelage fixe.



- * Detachable hitch type.
- * Abneembare anhängerkupplung.
- * Afneembare trekhaakkoppeling.
- * Crochet d'attelage détachable.



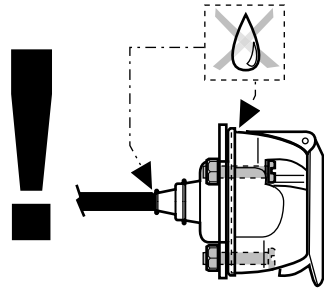
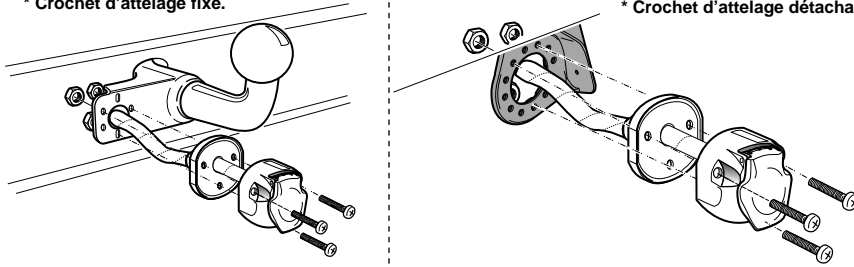
INFO Socket connection / Anschluß Steckdose / Contactdoos aansluiting / Connexion de la prise

| DIN/ISO 11446 | (GB) | (D) | (NL) | (F) |
|---------------|---------------|-------------|------------|--------------|
| | 1/L yellow | gelb | geel | jaune |
| | 2 blue | blau | blauw | bleu |
| | 2a grey | grau | grijs | gris |
| | 3/31 white | weiß | wit | blanc |
| | 4/R green | grün | groen | vert |
| | 5/58-R brown | braun | bruin | marron |
| | 6/54 red | rot | rood | rouge |
| | 7/58-L black | schwarz | zwart | noir |
| | 8 black/red | schwarz/rot | zwart/rood | noir/rouge |
| | 9 brown/white | braun/weiß | bruin/wit | marron/blanc |
| | 10 red | rot | rood | rouge |
| | 11 white | weiß | wit | blanc |
| | 12 | | | |
| | 13 white | weiß | wit | blanc |

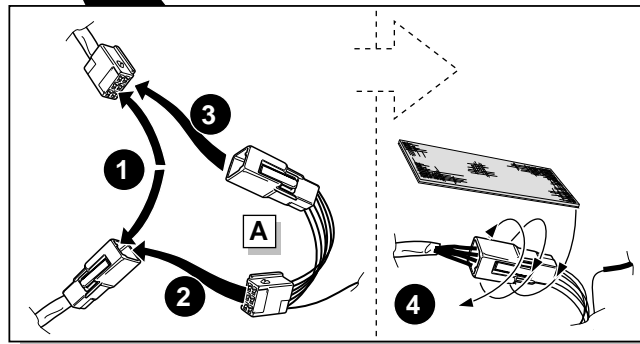
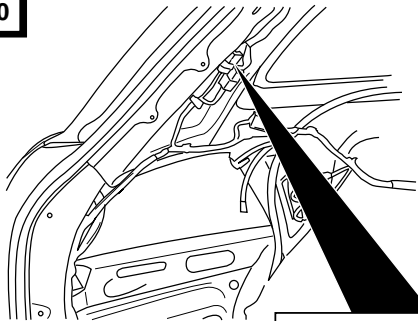
19

- * Fixed hitch type.
- * Feste anhängerkupplung.
- * Vaste trekhaakkoppeling.
- * Crochet d'attelage fixe.

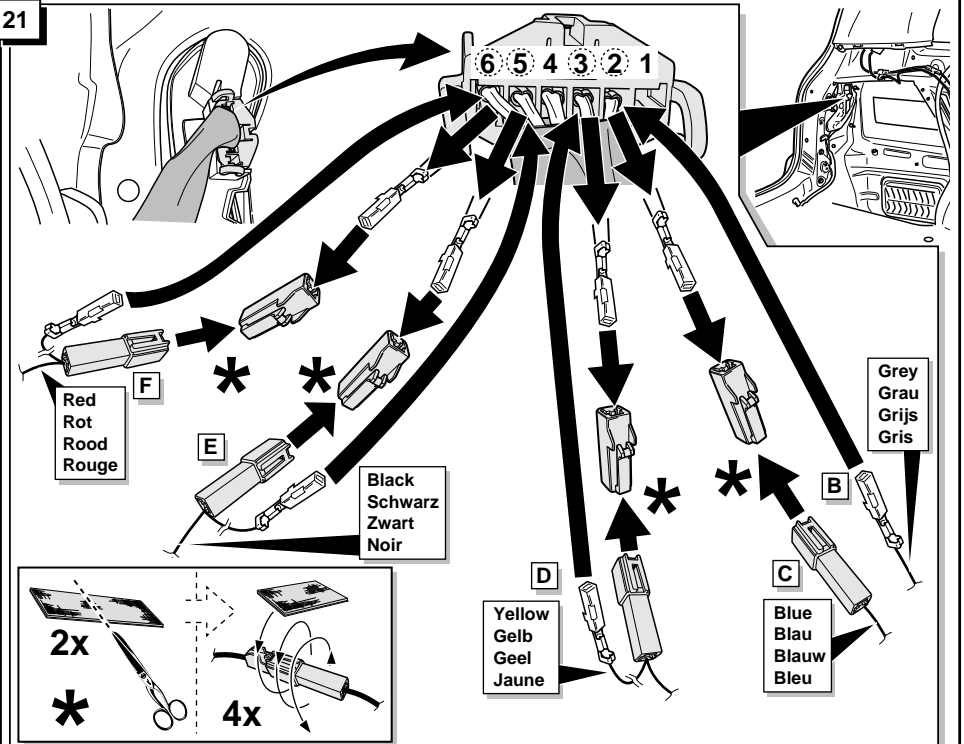
- * Detachable hitch type.
- * Abnehmbare anhängerkupplung.
- * Afneembare trekhaakkoppeling.
- * Crochet d'attelage détachable.



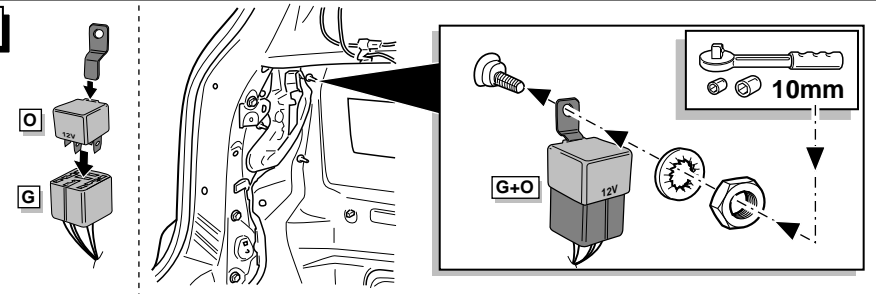
20



21



22



23

