



TOYOTA

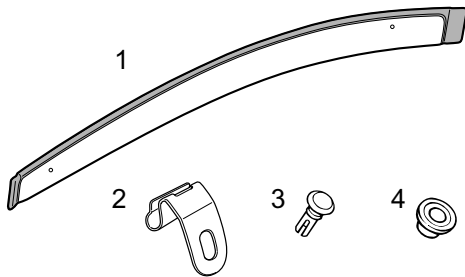
PRIUS

All types

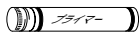
K15

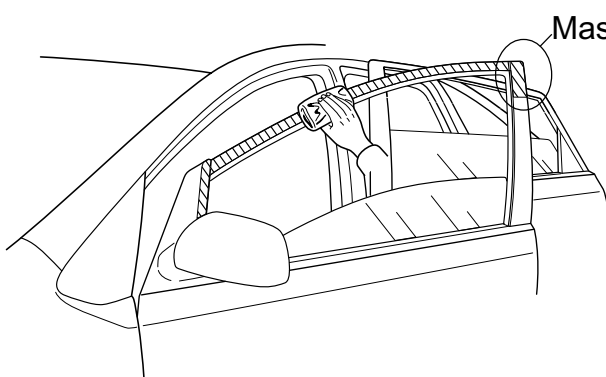
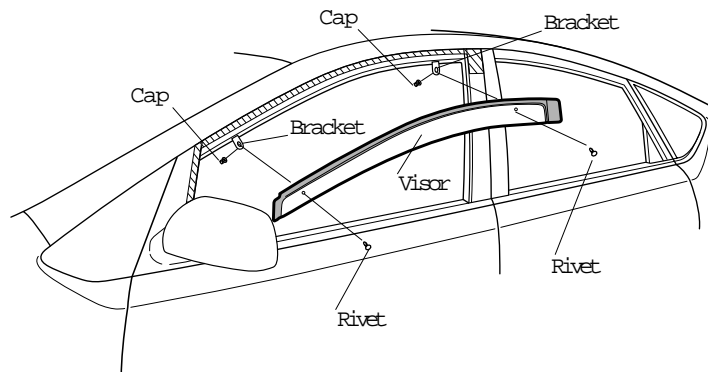
INSTALLATION OUTLINE DIAGRAM

PARTNUMBER: 08611-47810



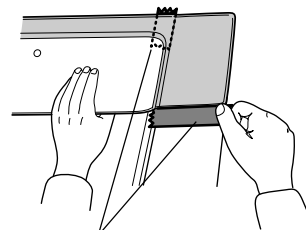
Nb.	Part Name	Qty.	
1	Visor	RH	1
		LH	1
2	Bracket	4	
3	Rivet	4	
4	Cap	4	

Part Name	PARTNUMBER
 Adhesive (bondstrengthening agent)	08833-00807



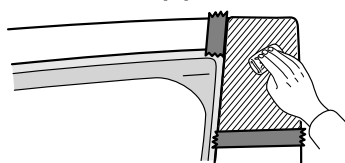
Masking section

Masking detail



Masking tape

Adhesives application range



- *Adhesive must be applied twice.
- *Attach visor only after the adhesive has dried to the touch (about 4 minutes).



TOYOTA

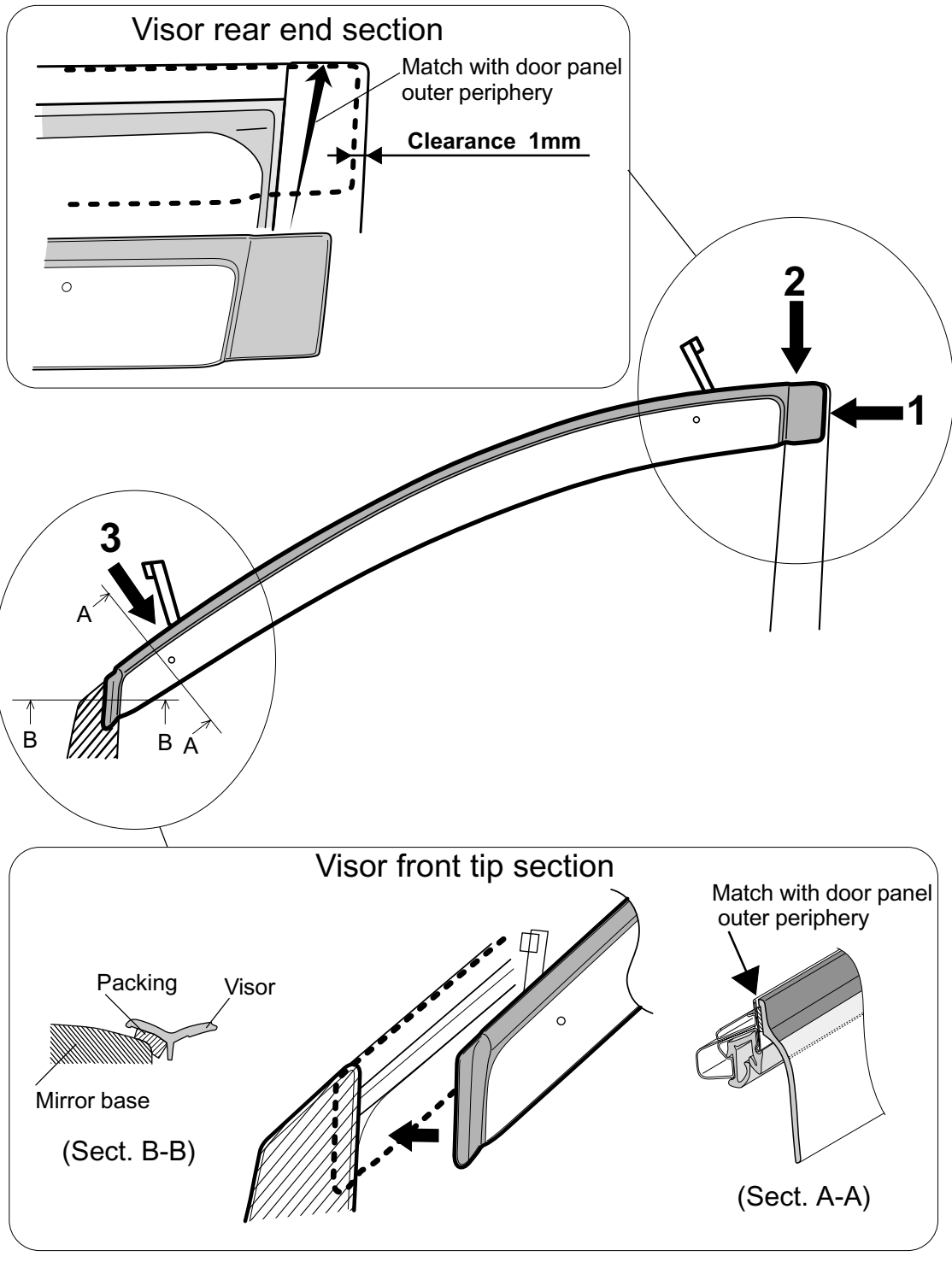
PRIUS

All types

K15

INSTALLATION OUTLINE DIAGRAM

PARTNUMBER: 08611-47810



INSTALLATION MANUAL-ANBAU ANLEITUNG-MONTAGE HANDLEIDING-MANUEL D'INSTATION