

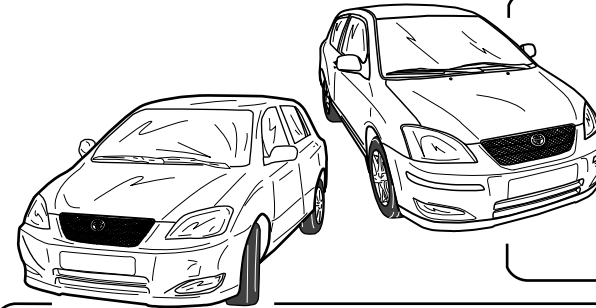


Vehicle
Corolla HB

Application
3 & 5 Dr 2002-

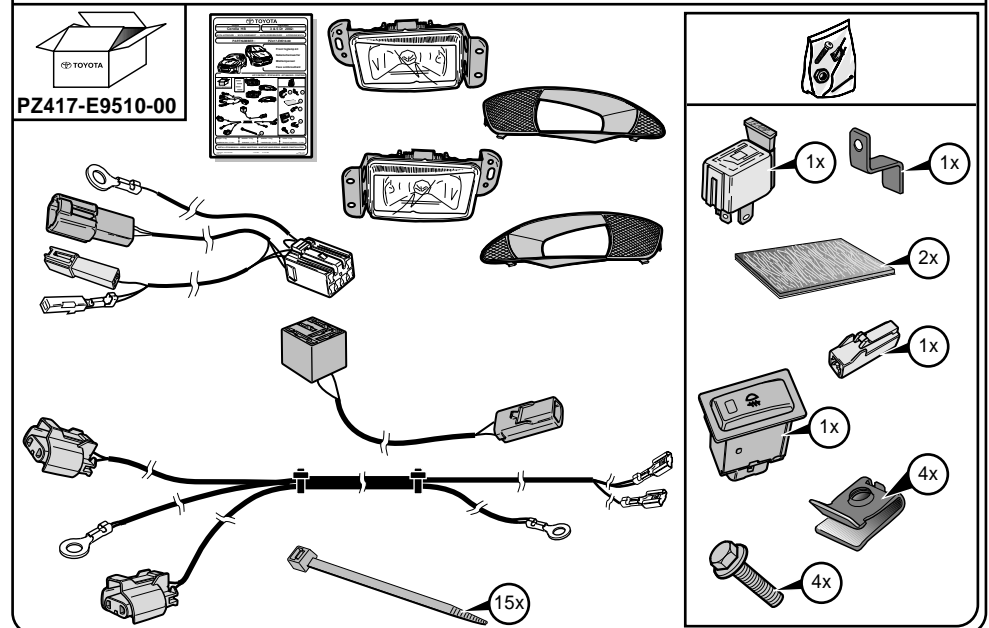
WVTA APPROVED - WVTA GENEHMIGT - WVTA GOEDGEKEURD - APPROUVE WVTA

PARTNUMBER : PZ417-E9510-00



**Front foglamp kit
Nebelscheinwerfer
Mistlampenset
Feux antibrouillard**

KIT CONTENT - STÜCKLISTE - KIT INHOUD - CONTENU



Weight : 2,46 kg	Gewicht : 2,46 kg	Gewicht : 2,46 kg	Poids : 2,46 kg
Installation time : 50 min.	Anbauzeit : 50 min.	Installatie tijd : 50 min.	Temps d' installation : 50 min.

INSTALLATION MANUAL - ANBAU ANLEITUNG - MONTAGE HANDLEIDING - MANUEL D'INSTALLATION

PARTNAME : Front foglamp set / Nebelscheinwerfer
Mistlampenset / Feux antibrouillard

PARTNUMBER : PZ417-E9510-00

APPLICATION - ANWENDUNG - APPLICATIE - APPLICATION

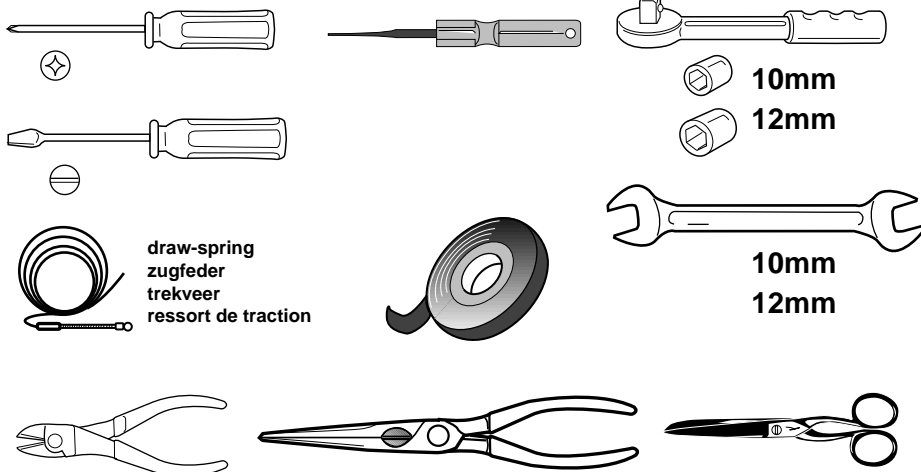
Corolla Hatchback 3 & 5 Dr: **E12-D****W**

☺	☹
VEHICLE OPTION - FAHRZEUG OPTION - VOERTUIG OPTIE - OPTION VEHICULE	
Not applicable	Not applicable
Nicht zutreffend	Nicht zutreffend
Niet van toepassing	Niet van toepassing
Non applicable	Non applicable

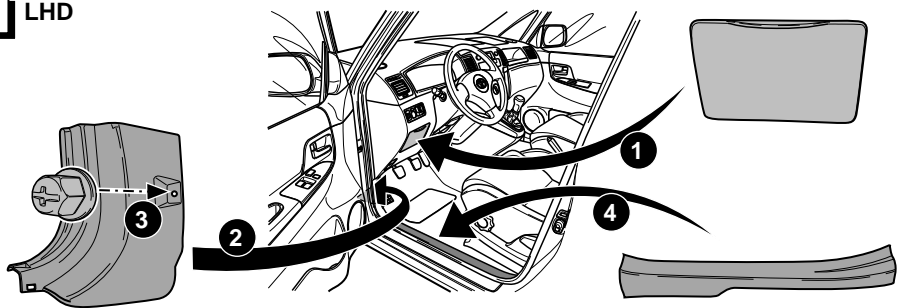
ACCESSORY - ZUBEHÖR - ACCESSOIRE- ACCESSOIRE	
Not applicable	Not applicable
Nicht zutreffend	Nicht zutreffend
Niet van toepassing	Niet van toepassing
Non applicable	Non applicable

SAFETY PRECAUTION - SICHERHEITSMABNAHME - VEILIGHEIDSVORSCHRIFTEN - PRECAUTIONS DE SECURITE	
Not applicable	
Nicht zutreffend	
Niet van toepassing	
Non applicable	

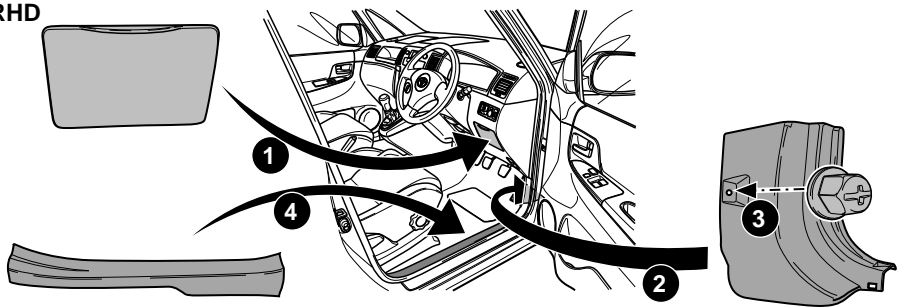
TOOLS - WERKZEUGE - WERKTUIGEN - OUTILS



27 LHD



RHD



*Number of installation steps : 27

*Zahl der Einbauschritte: 27

*Aantal installatie stappen: 27

*Nombre des démarches d'installation: 27

CRITICAL OPERATIONS - SICHERHEITSMABNAHME - KRITIEKE HANDELINGEN - OPERATIONS DÉLICATE

Picture: 17

Abbildung: 17

Figuur: 17

Illustration: 17

ATTENTION - LET OP - ACHTUNG - ATTENTION

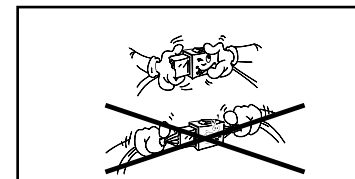
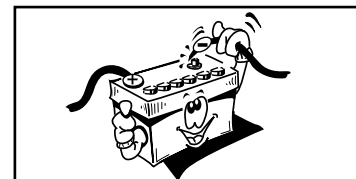
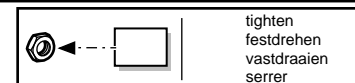
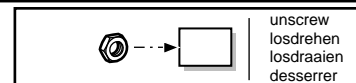
- The use of front foglamps in traffic situations is subject to the local regulations.
- Die Benutzung der Nebelscheinwerfer richtet sich nach den örtlichen Bestimmungen.
- Het gebruik van mistlampen is onderhevig aan plaatselijke verkeersregels.
- L'utilisation des feux antibrouillard est soumise a des réglementations locales

* Modifications of spanner jaw size for hexagonal bolts and nuts according to ISO 272 (1990). Please check the respective widths and only use the correct tools.

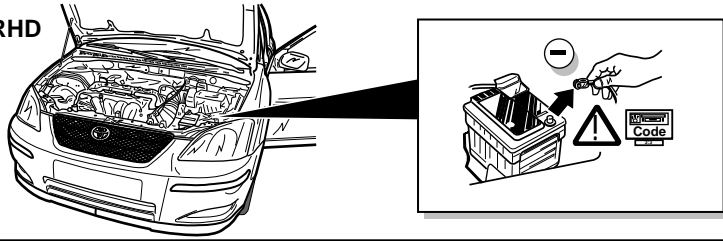
* Umstellung der Schlüsselweiten von Sechskantschrauben und Muttern nach ISO 272 (1990). Bitte prüfen Sie die jeweilige Schlüsselweite und verwenden Sie nur das hierzu passende Werkzeug.

* Omzetting van de sleutelwijdten voor zes-kantschroeven en moeren volgens ISO 272 (1990). Controleert U a.u.b. elke sleutelwijdte en gebruik alleen het hiervoor bestemde gereedschap.

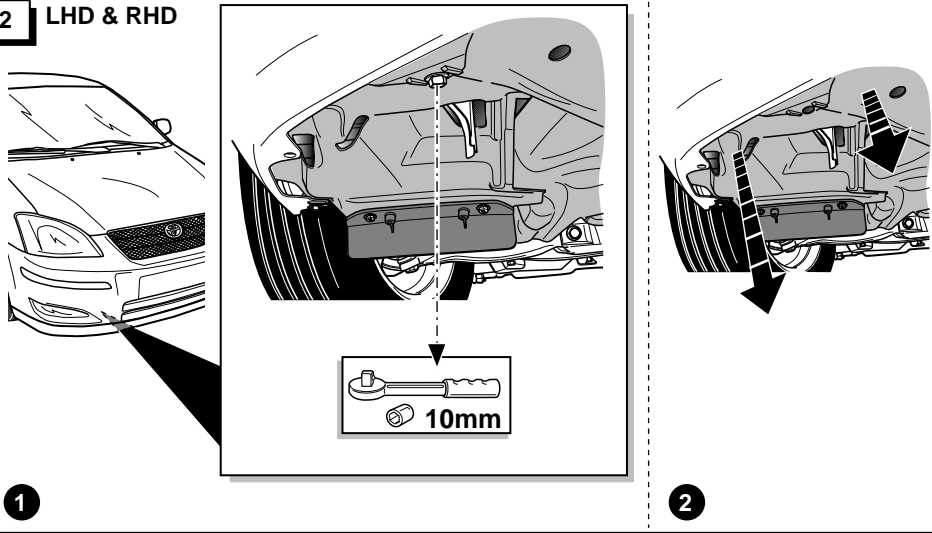
* Modification de la taille des clefs pour les boulons et écroux hexagonaux conformément a ISO 272 (1990). Veuillez contrôler la largeur respective des clefs et n' employez qu' un outillage approprié.



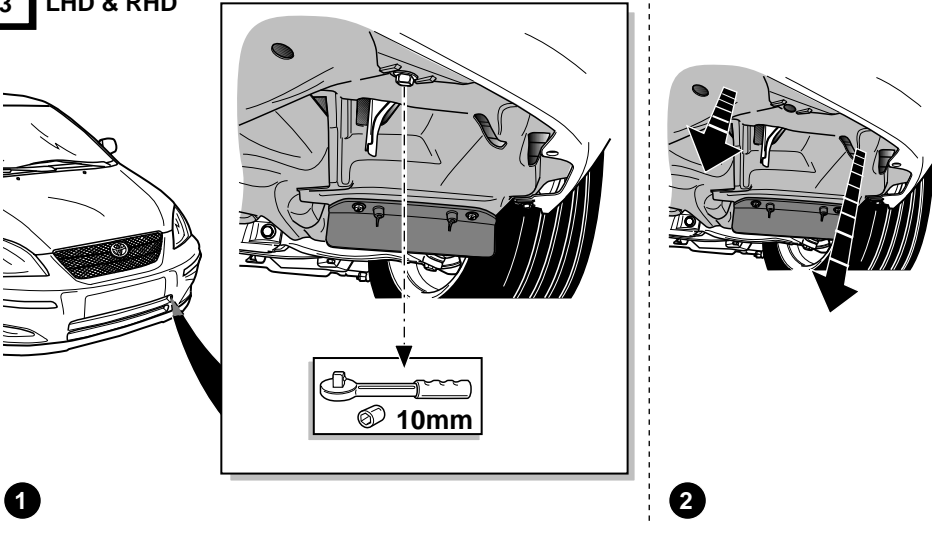
1 LHD & RHD



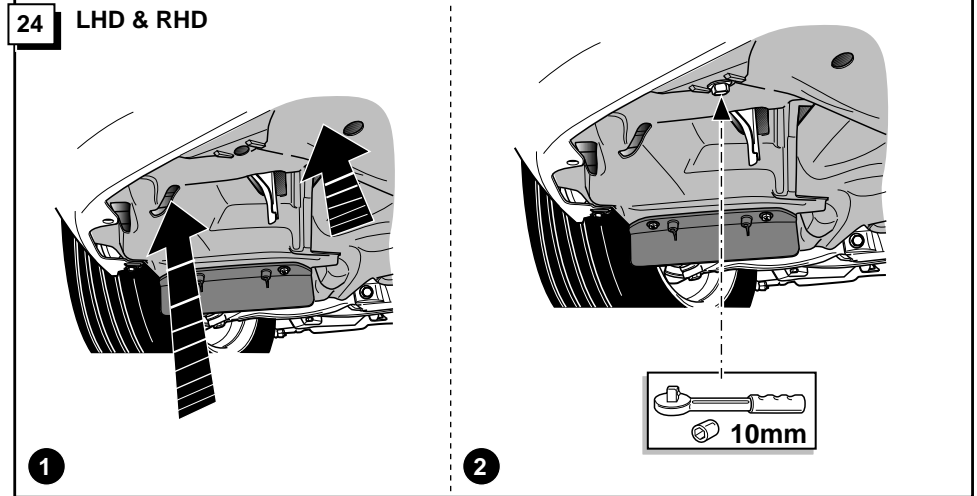
2 LHD & RHD



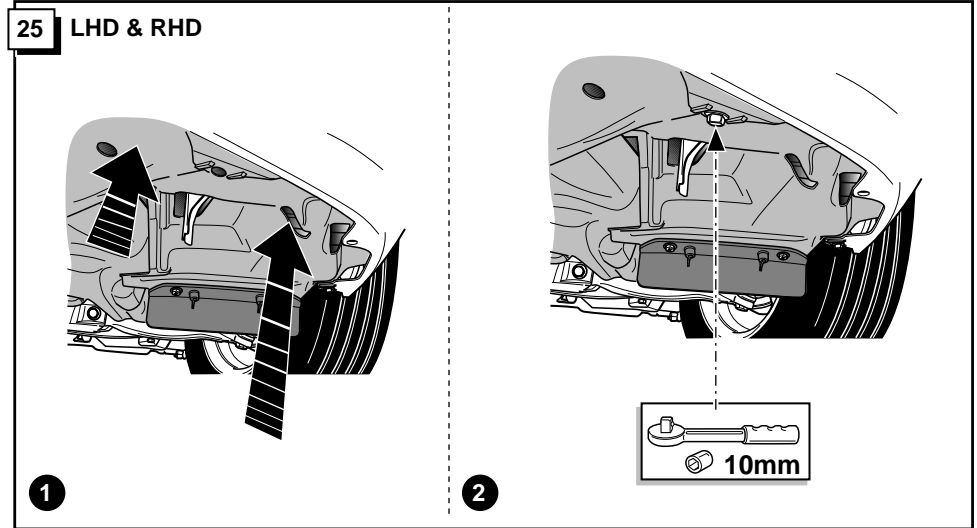
3 LHD & RHD



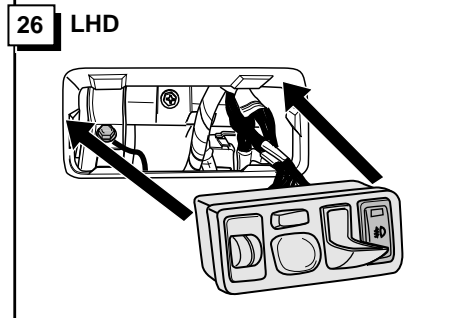
24 LHD & RHD



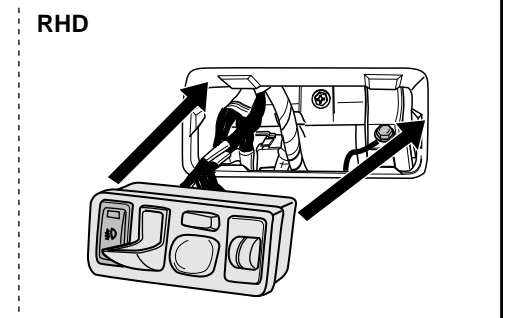
25 LHD & RHD



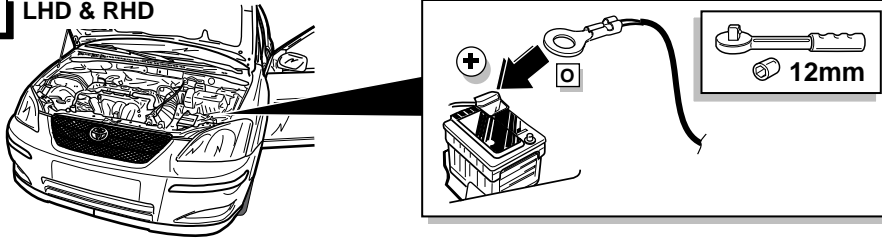
26 LHD



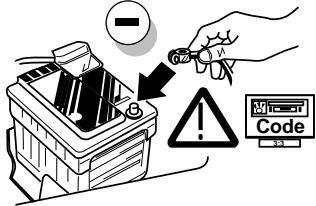
RHD



19 LHD & RHD



20 LHD & RHD



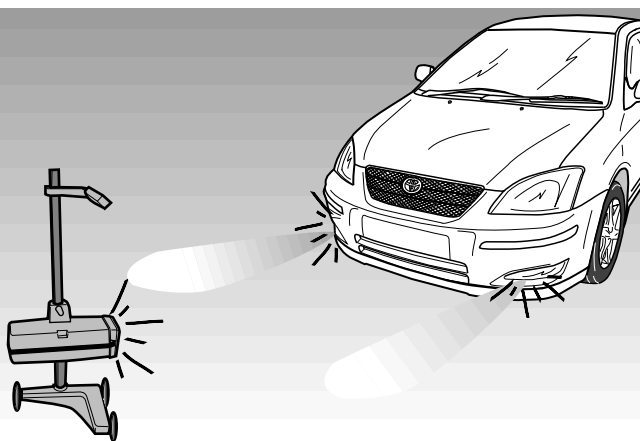
21 LHD & RHD

- 1 Turn the light-switch in position 1 or 2.
Der Lichtschalter in position 1 oder 2 drehen.
Draai de lichtschakelaar in positie 1 of 2.
Tourner le interrupteur de lumière dans la position 1 ou 2
- 2 Switch on the front fog lamps.
Die Nebelleuchten einschalten.
Schakel de mist voorlampen in.
Mettre les feux de brouillard en circuit.

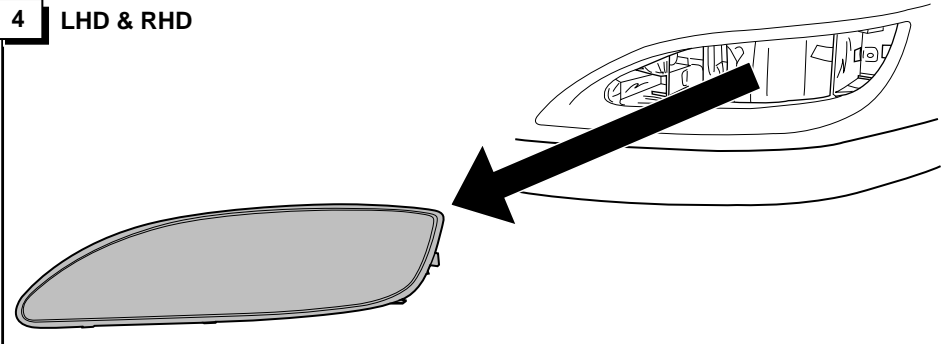
22 LHD & RHD

! CHECK FUNCTIONS !
! FUNKTIONEN KONTROLLIEREN !
! CONTROLEER FUNCTIES !
! CONTRÔLER LES FONCTIONS !

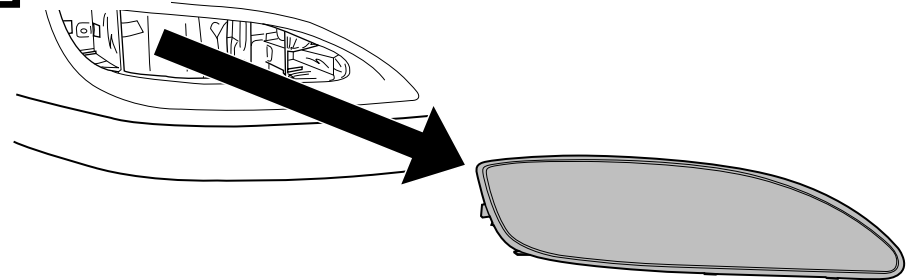
23 LHD & RHD



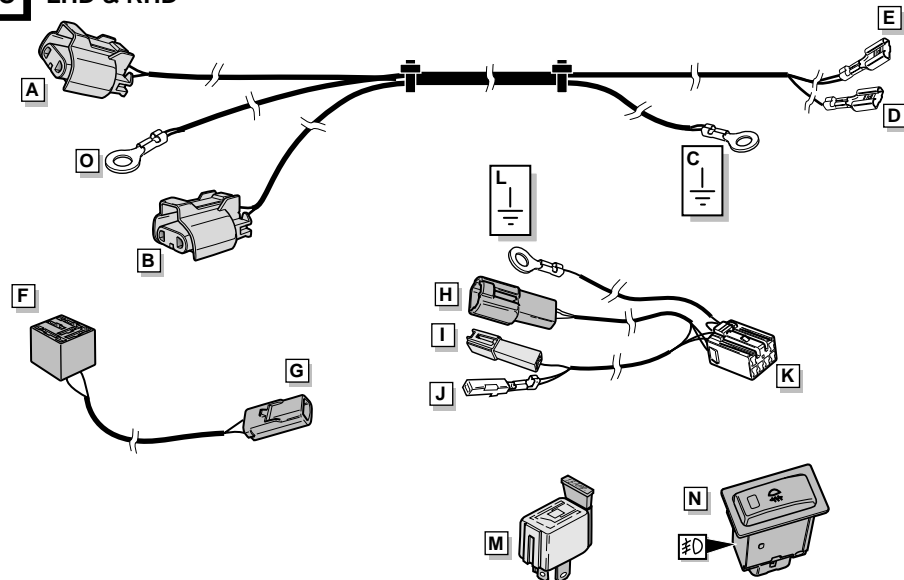
4 LHD & RHD



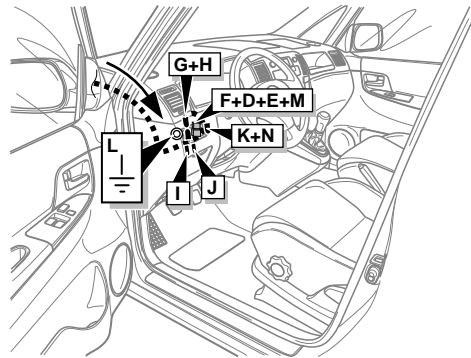
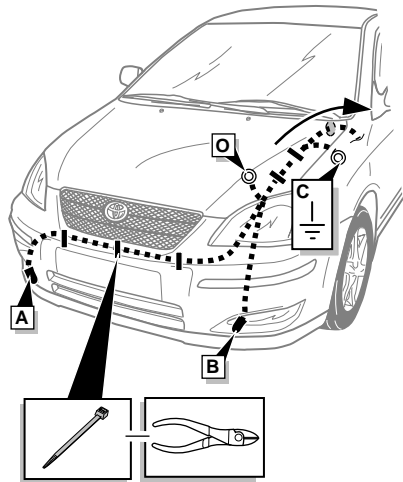
5 LHD & RHD



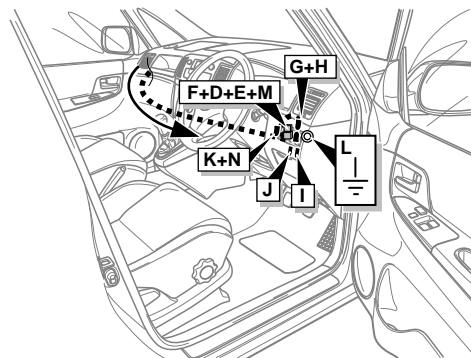
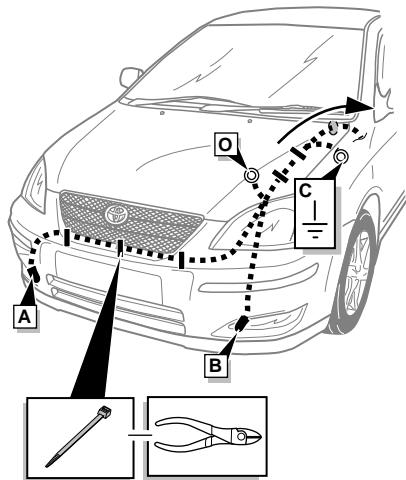
INFO LHD & RHD



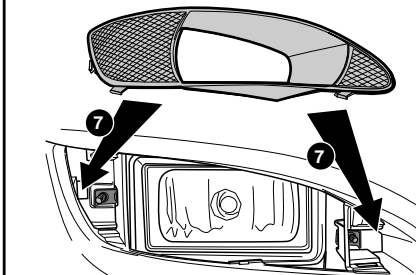
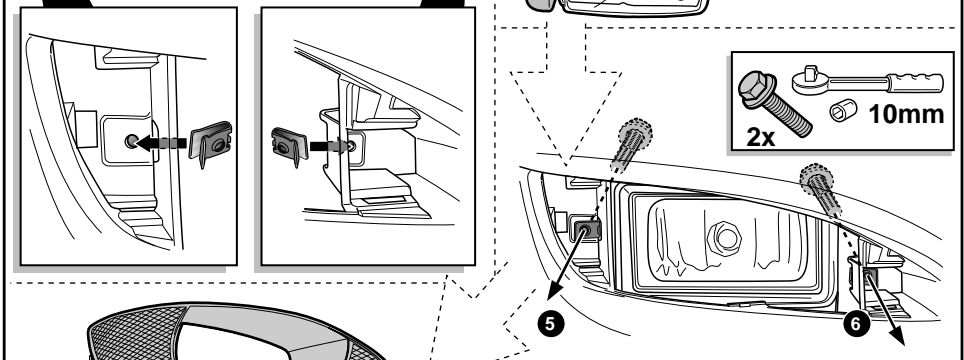
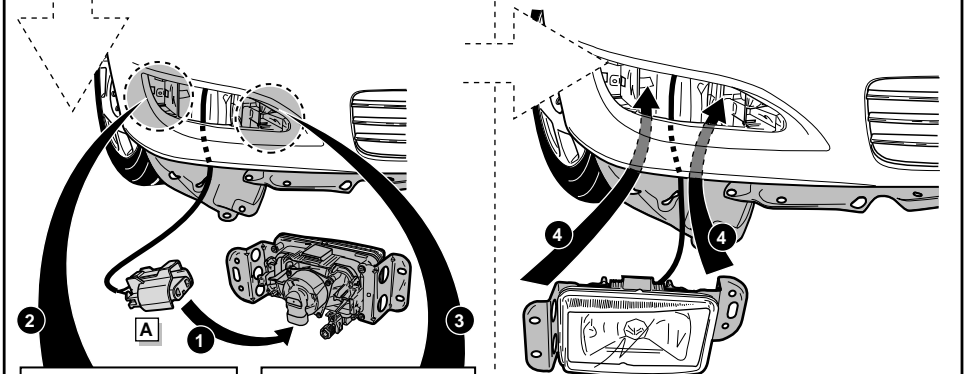
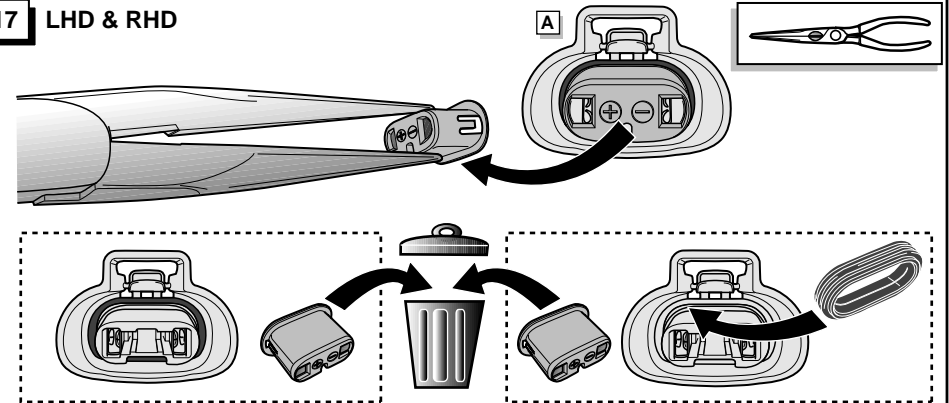
ROUTING LHD



RHD



17 LHD & RHD



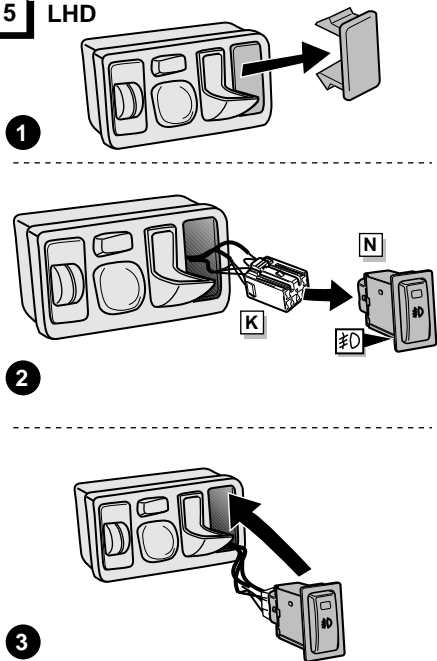
18 Repeat fig. 17 for the left foglamp.

Fig. 17 für den linken Nebelscheinwerfer wiederholen.

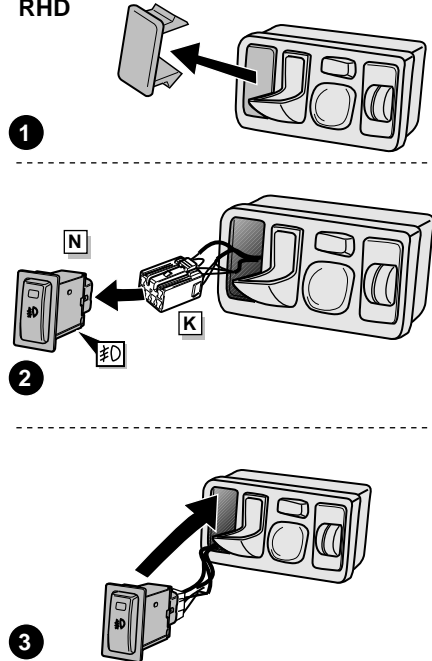
Herhaal fig. 17 voor de linker mistlamp.

Répétez fig. 17 pour le feu de brouillard gauche.

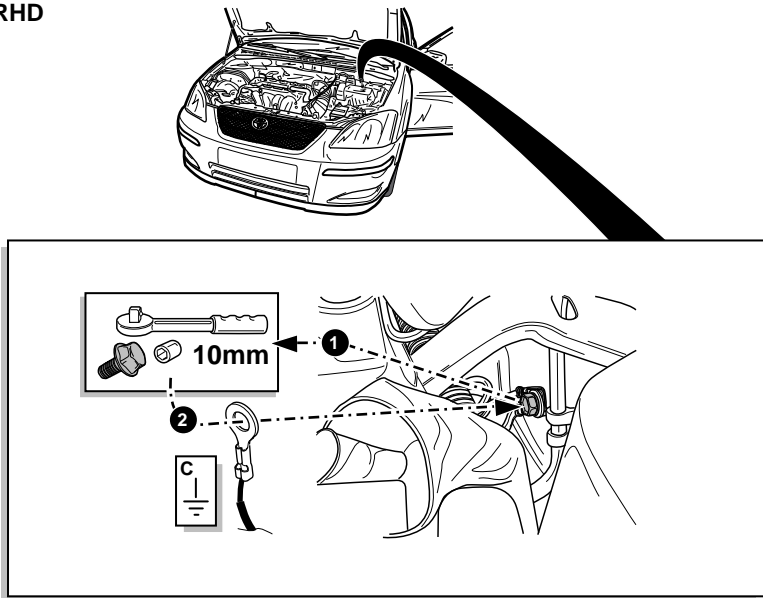
15 LHD



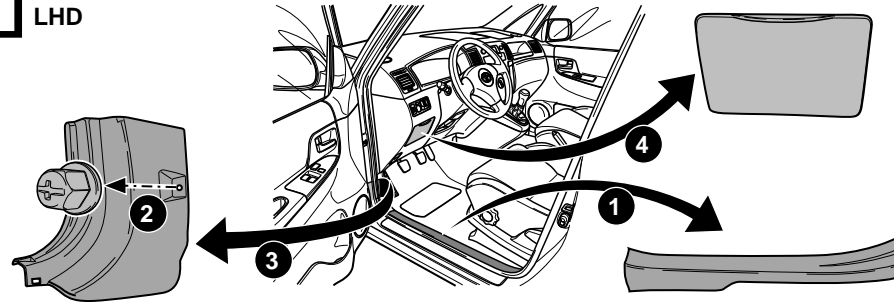
RHD



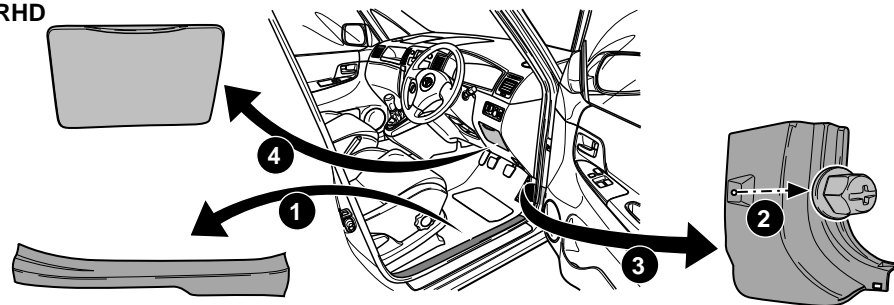
16 LHD & RHD



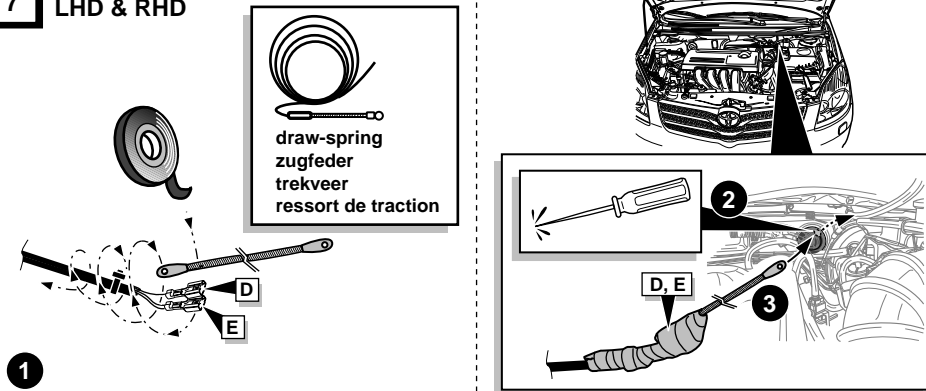
6 LHD



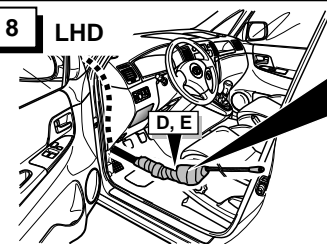
RHD



7 LHD & RHD

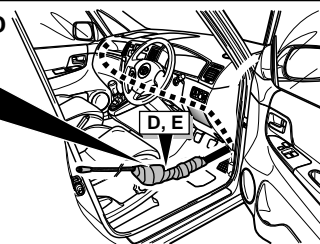


8 LHD

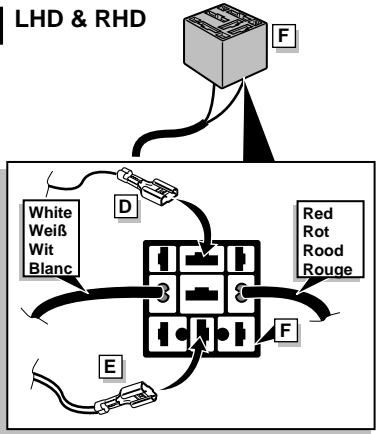


* Remove tape
* Klebeband
entfernen
* Tape verwijderen
* enlevez Ruban
adhésif

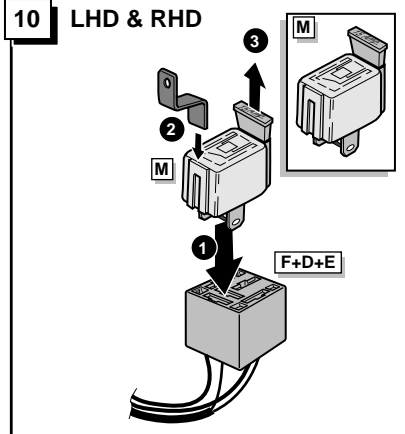
RHD



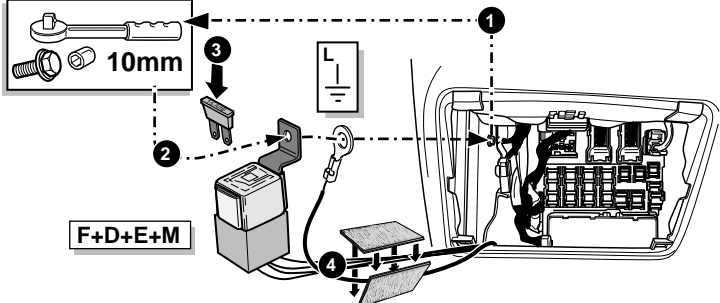
9 LHD & RHD



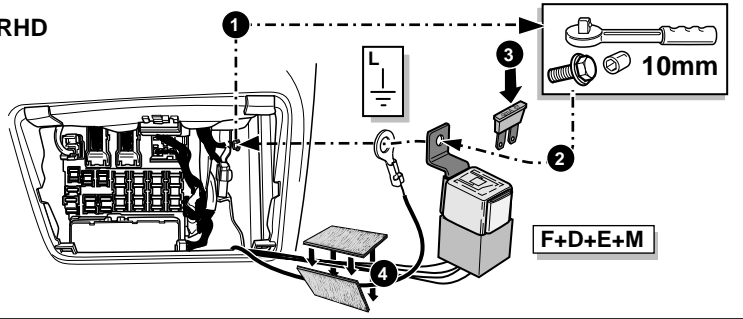
10 LHD & RHD



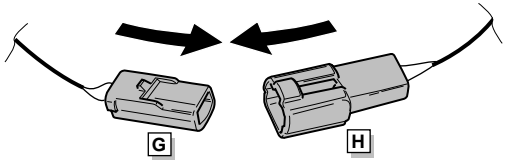
11 LHD



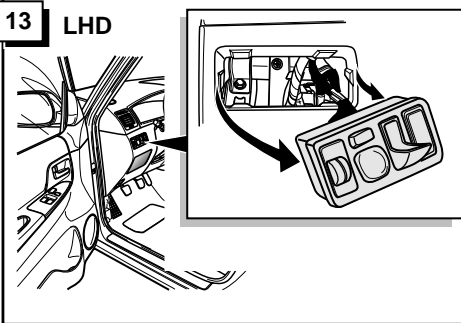
RHD



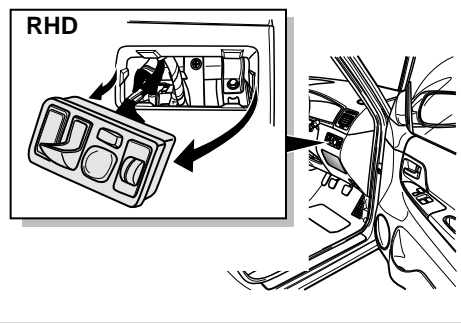
12 LHD & RHD



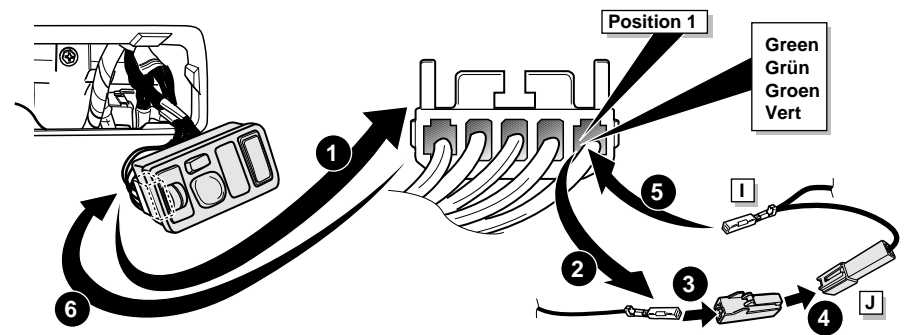
13 LHD



RHD



14 LHD



RHD

