

PARTNAME : Towbar wiring-kit / Anhängerkuppungsatz
Trekhaak kabelset / Remorque d'attelage

PARTNUMBER : PZ417-D3561-00

APPLICATION - ANWENDUNG - APPLICATIE - APPLICATION

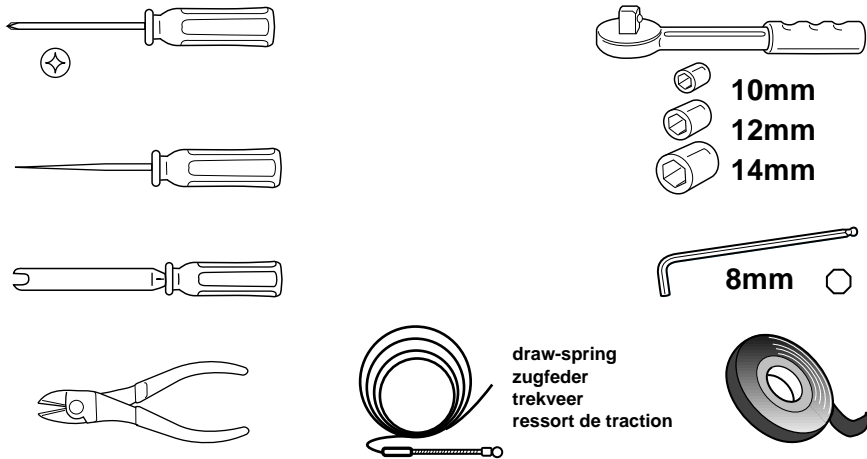
MODELCODE Yaris Verso 2000- : NCP2*L-CH**KW

☺	☹
VEHICLE OPTION - FAHRZEUG OPTION - VOERTUIG OPTIE - OPTION VEHICULE	VEHICLE OPTION - FAHRZEUG OPTION - VOERTUIG OPTIE - OPTION VEHICULE
Not applicable	Not applicable
Nicht zutreffend	Nicht zutreffend
Niet van toepassing	Niet van toepassing
Non applicable	Non applicable

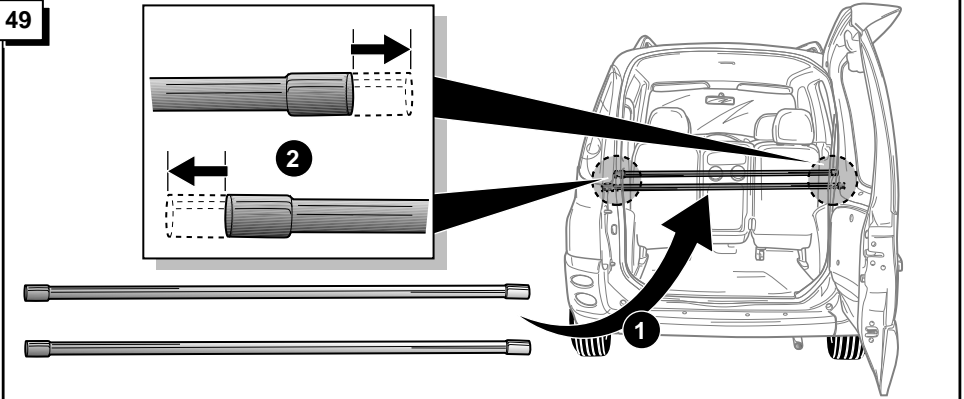
ACCESSORY - ZUBEHÖR - ACCESSOIRE- ACCESSOIRE	ACCESSORY - ZUBEHÖR - ACCESSOIRE- ACCESSOIRE
Not applicable	Not applicable
Nicht zutreffend	Nicht zutreffend
Niet van toepassing	Niet van toepassing
Non applicable	Non applicable

SAFETY PRECAUTION - SICHERHEITSMABNAHME - VEILIGHEIDSVORSCHRIFTEN - PRECAUTIONS DE SECURITE	SAFETY PRECAUTION - SICHERHEITSMABNAHME - VEILIGHEIDSVORSCHRIFTEN - PRECAUTIONS DE SECURITE
Not applicable	Not applicable
Nicht zutreffend	Nicht zutreffend
Niet van toepassing	Niet van toepassing
Non applicable	Non applicable

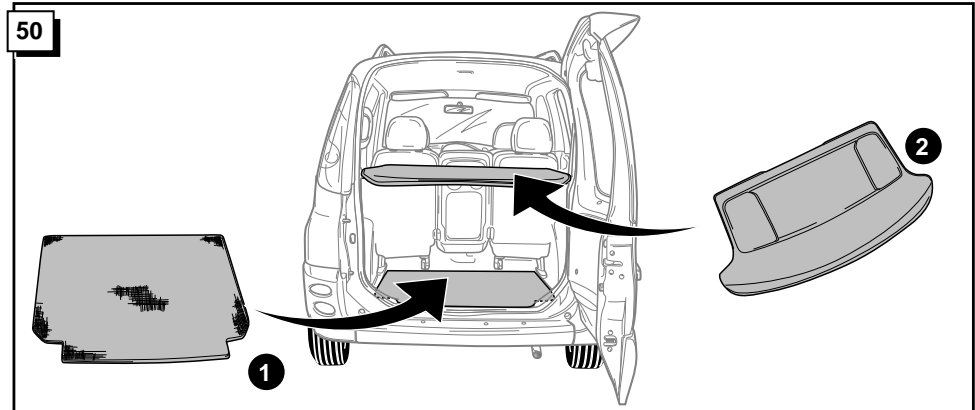
TOOLS - WERKZEUGE - WERKTUIGEN - OUTILS



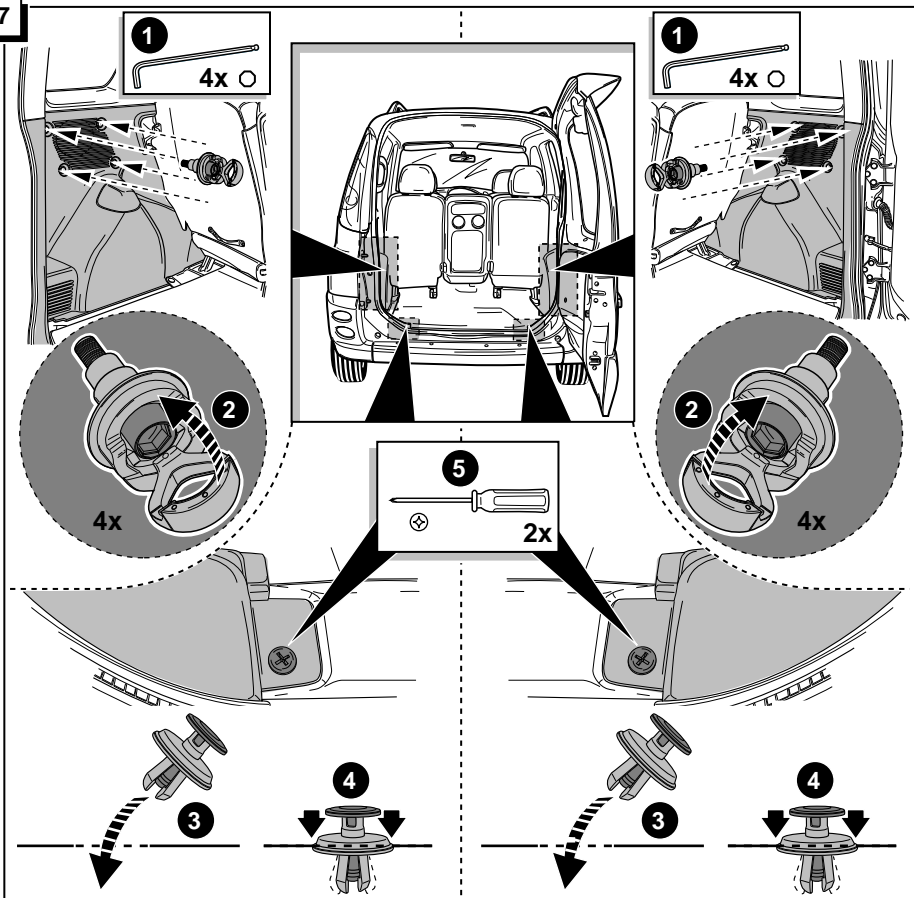
49



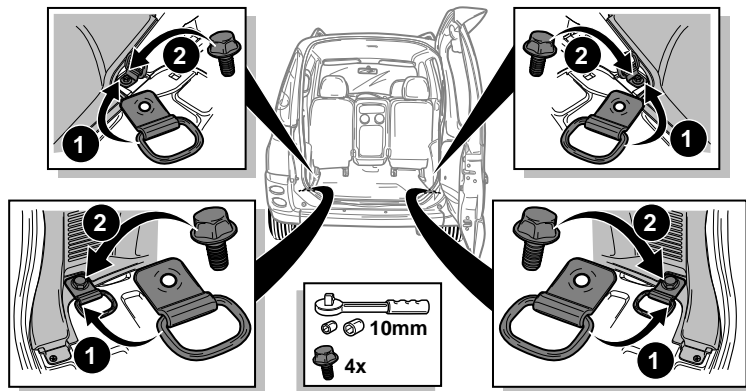
50



47



48



*Number of installation steps : 50

*Aantal installatie stappen: 50

*Zahl der Einbauschritte: 50

*Nombre des démarches d'installation: 50

CRITICAL OPERATIONS - SICHERHEITSMÄSSIGKEIT - KRITIEKE HANDELINGEN - OPERATIONS DÉLICATE

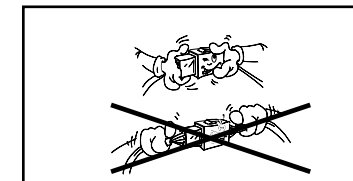
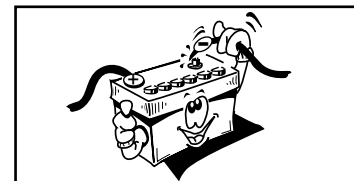
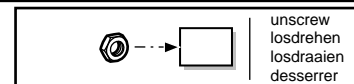
Picture:

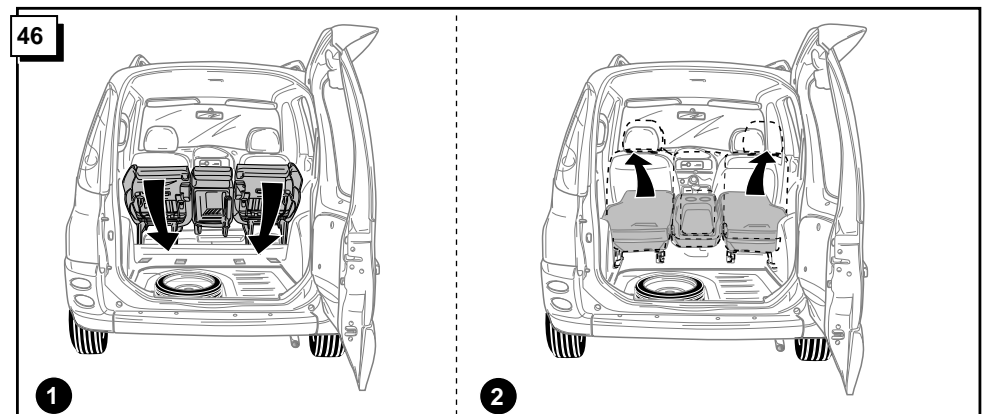
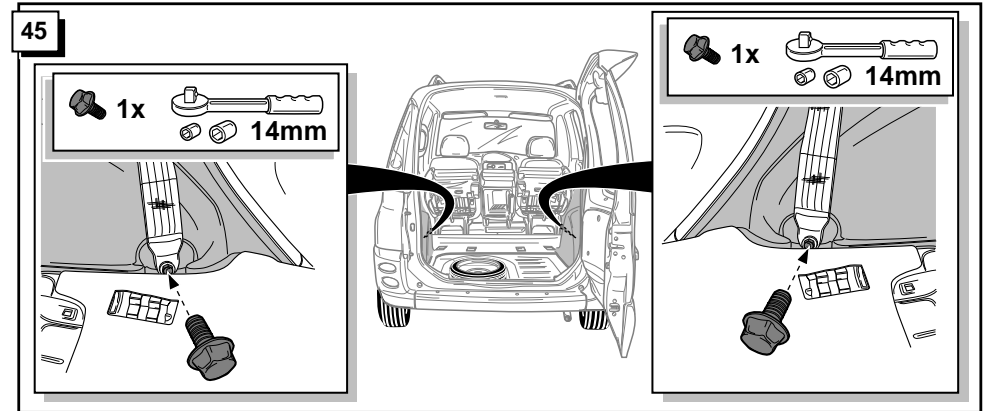
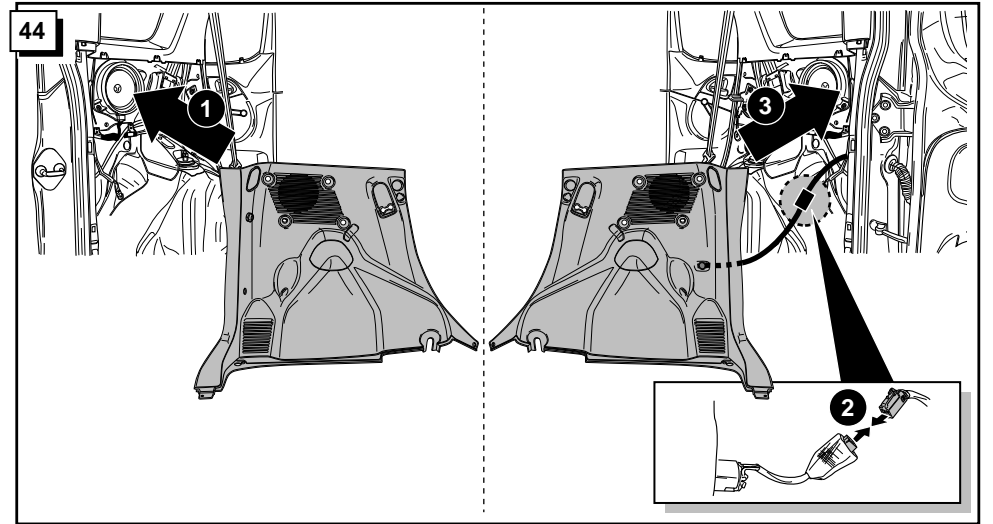
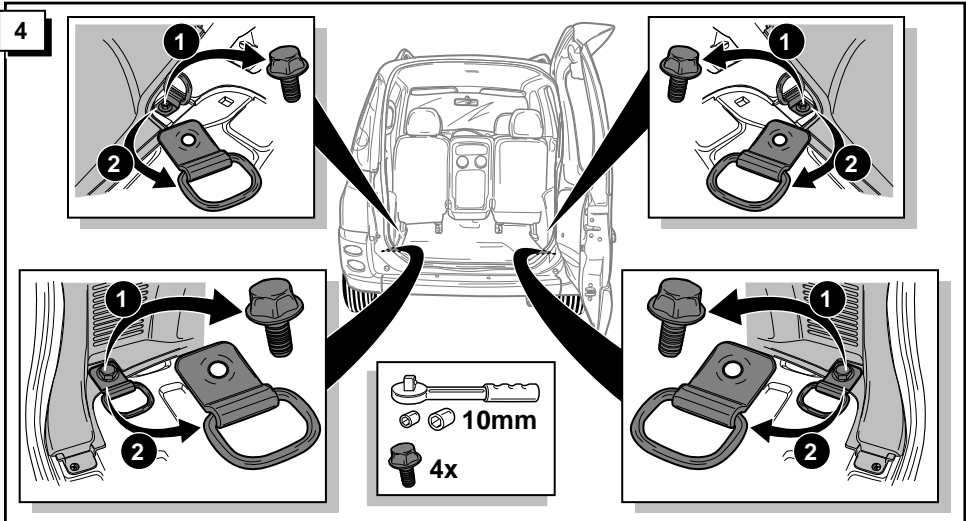
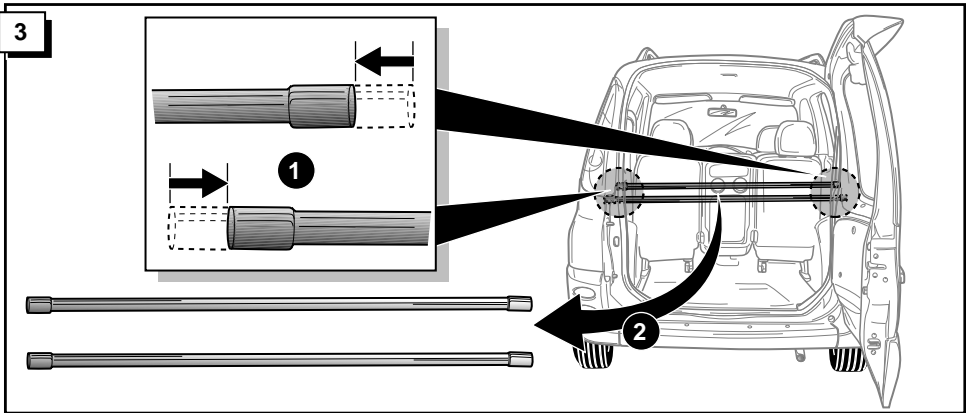
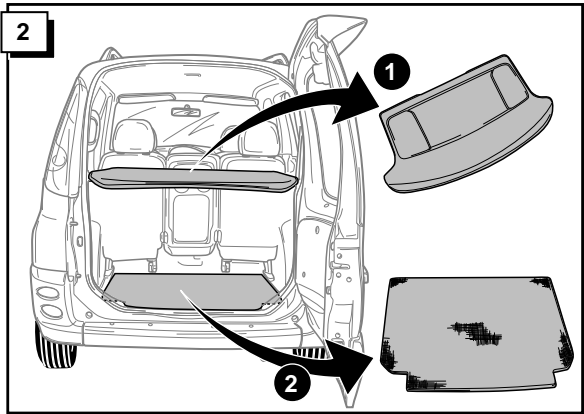
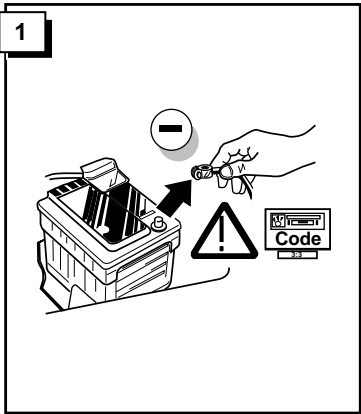
Abbildung:

Figuur:

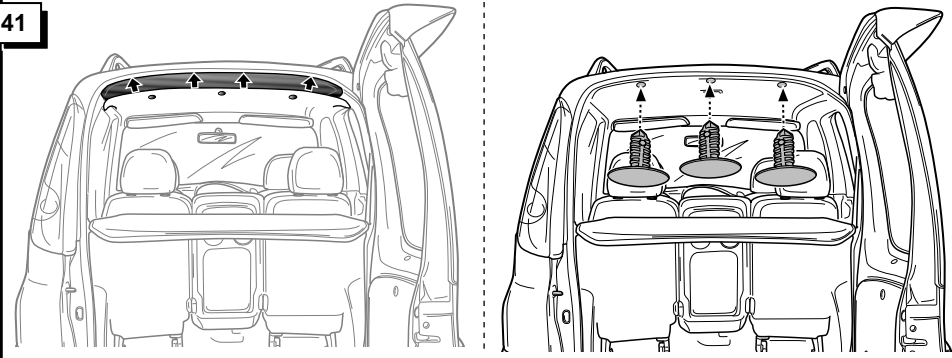
Illustration:

- * Modifications of spanner jaw size for hexagonal bolts and nuts according to ISO 272 (1990). Please check the respective widths and only use the correct tools.
- * Umstellung der Schlüsselweiten von Sechskantschrauben und Muttern nach ISO 272 (1990). Bitte prüfen Sie die jeweilige Schlüsselweite und verwenden Sie nur das hierzu passende Werkzeug.
- * Omzetting van de sleutelwijdten voor zes-kantschroeven en moeren volgens ISO 272 (1990). Controleert U a.u.b. elke sleutelwijdte en gebruik alleen het hiervoor bestemde gereedschap.
- * Modification de la taille des clefs pour les boulons et écroux hexagonaux conformément à ISO 272 (1990). Veuillez contrôler la largeur respective des clefs et n' employez qu' un outillage approprié.

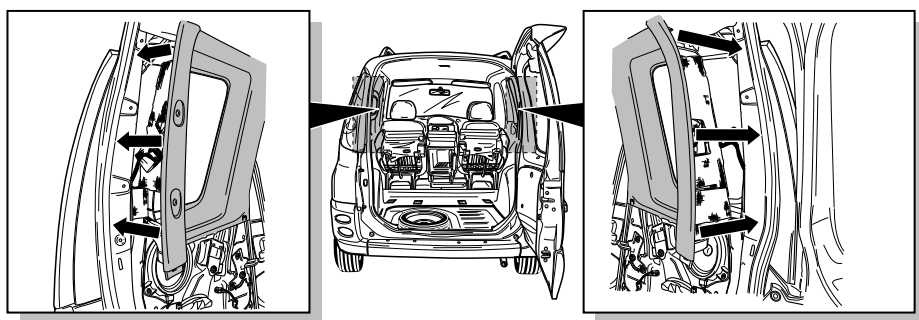




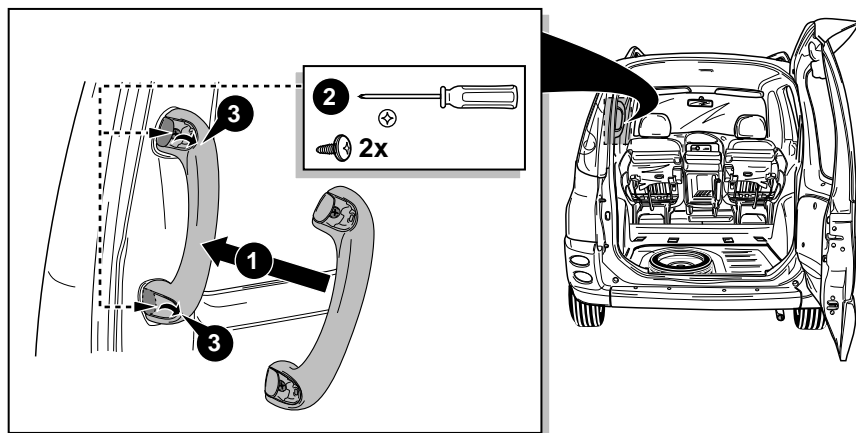
41



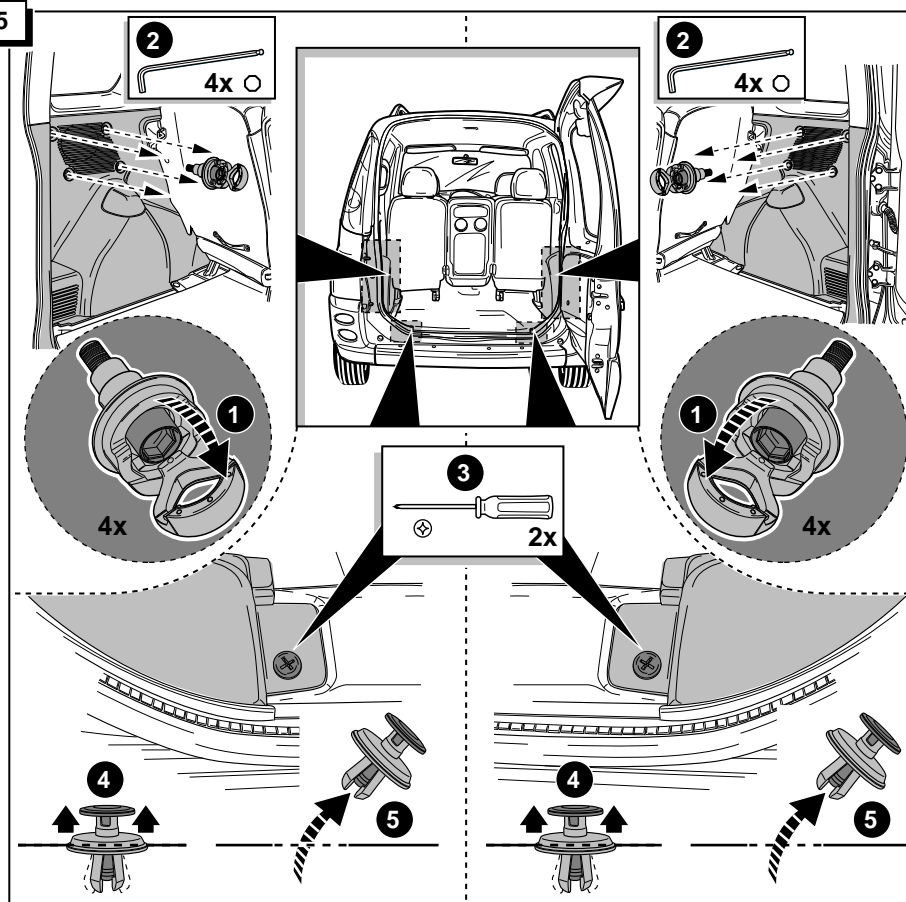
42



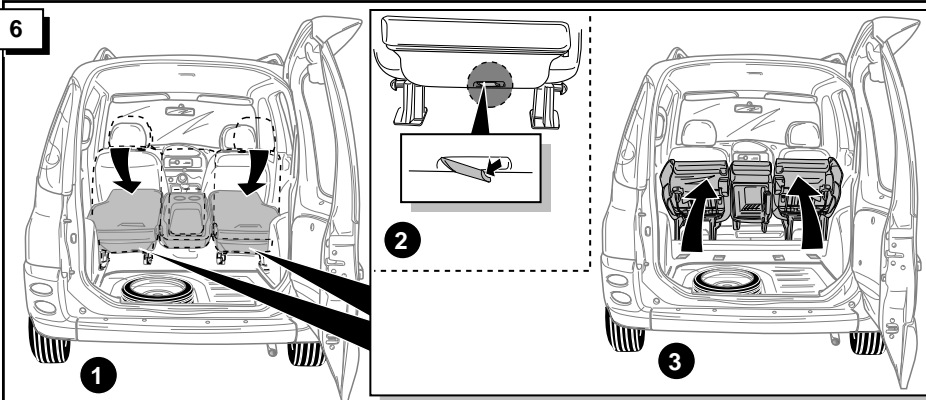
43



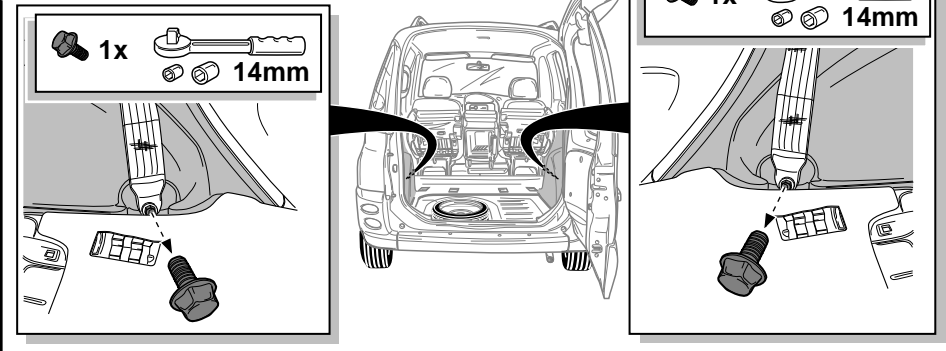
5



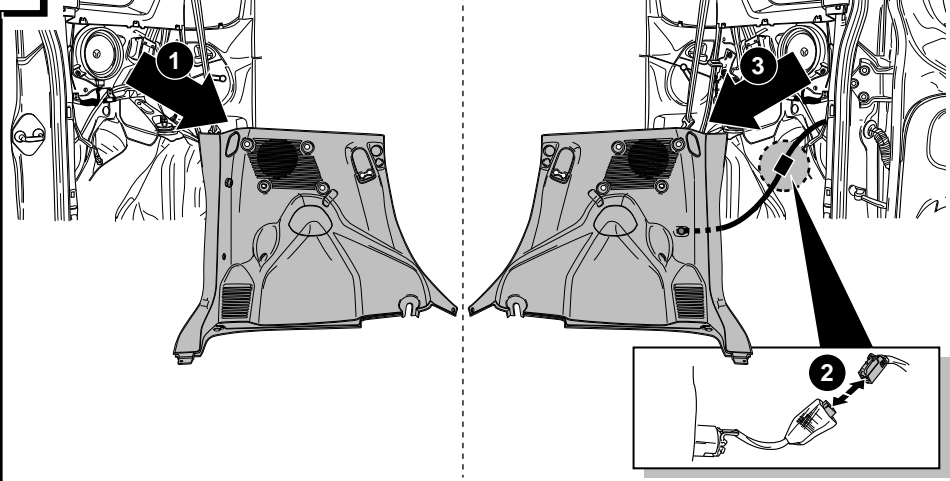
6



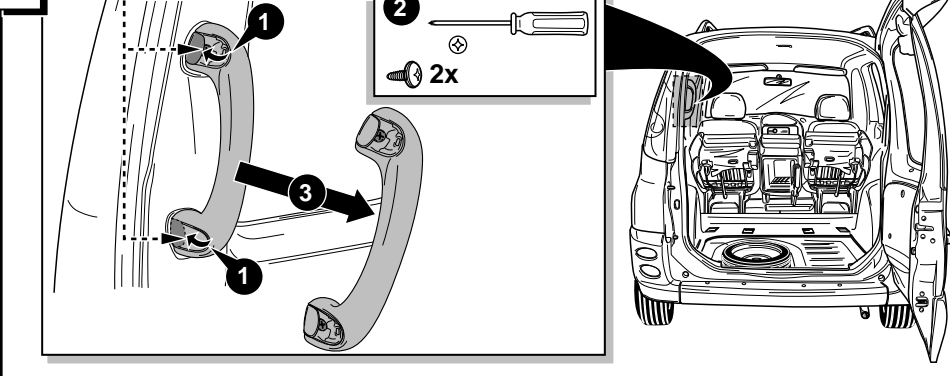
7



8



9



INFO

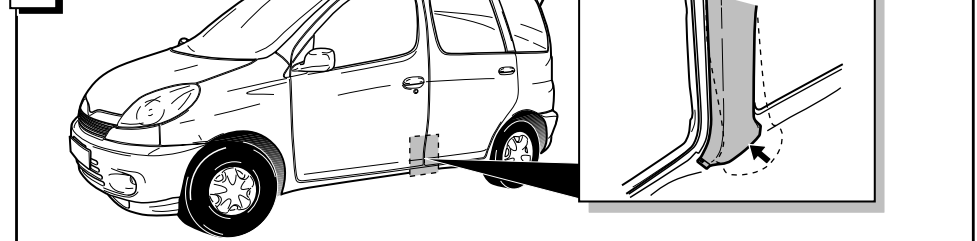
*The functioning of the C2-module can be tested by connecting the trailer/caravan (or a test-box with 21W lamps) and switching on the indicator lights with a removed indicator light. The other indicator lights will flash quicker. (ATTENTION: a test-box on which only LED's are being used, can not be used in this case).

*Die Wirkung des C2-Steuergeräts kann mittels des Anschlusses des Anhängers (oder Testkasten mit 21W Lampen) und der Anschaltung des Blinkgebers mit einem ausgedrehten Blinklicht geprüft werden. Die andere Blinklichter blinken dann schneller. (Achtung: Ein Testkasten wo ausschließend LED's als Belastung verwendet werden, kann hierfür nicht verwendet werden).

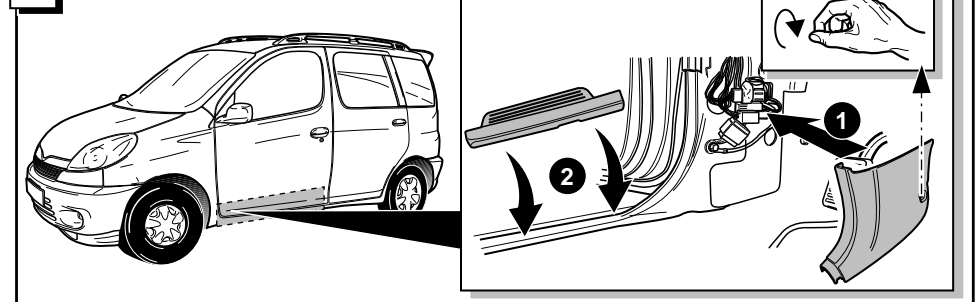
*De werking van de C2-module kan getest worden door een aanhanger (of testkast met 21W lampen) aan te sluiten en met een losgedraaid knipperlicht richting aan te geven. De andere knipperlichten knipperen nu snel. (LET OP: een testkast waar uitsluitend LED's als belasting gebruikt worden, kan hiervoor niet worden gebruikt.)

*Le fonctionnement du module C2 peut être contrôlé en branchant une remorque/caravane (ou boîte test avec des lampes 21W) et en indiquant une direction avec une lampe clignotante dévissée. Les autres lampes clignotantes clignotent alors plus rapidement. (Attention: une boîte test où ne sont utilisés que les témoins de contrôle comme charge, ne peut être utilisé dans ce cas.)

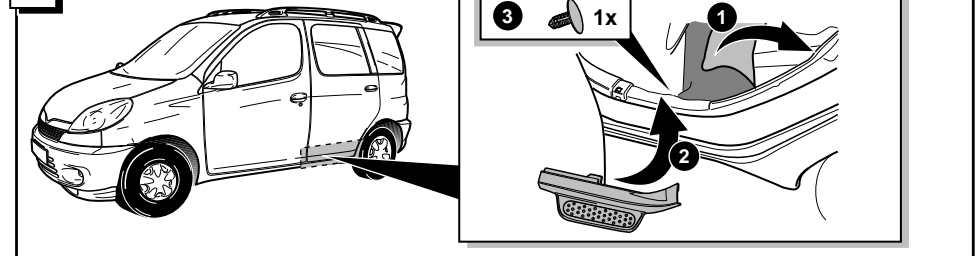
38



39



40



33

BROWN/WHITE
BRAUN/WEIß
BRUIN/WIT
MARRON/BLANC

BROWN/WHITE
BRAUN/WEIß
BRUIN/WIT
MARRON/BLANC

RED
ROT
ROOD
ROUGE

H+I

1

2

34

H+I

35

J

12mm

36

37

! CHECK FUNCTIONS !
FUNKTIONEN KONTROLIEREN !
CONTROLEER FUNCTIES !
CONTRÔLER LES FONCTIONS !

10

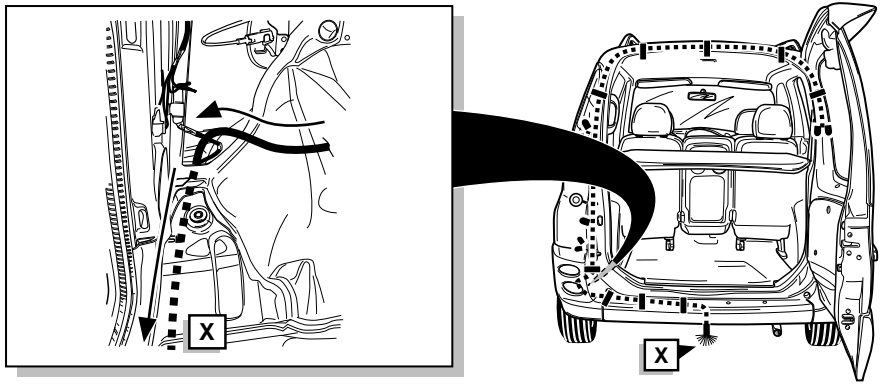
11

3x

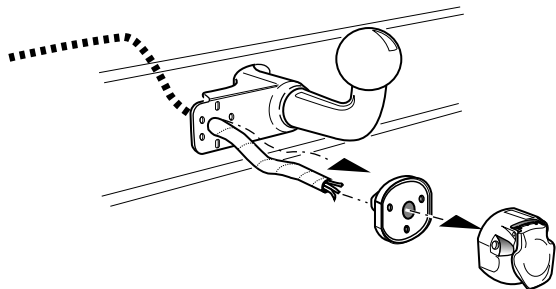
INFO

ROUTING

12



13

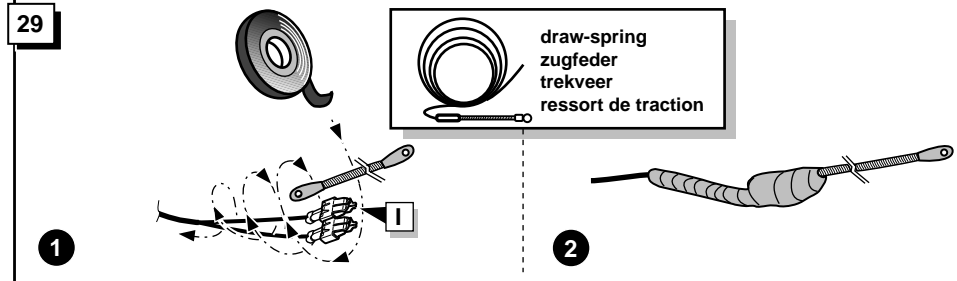


INFO

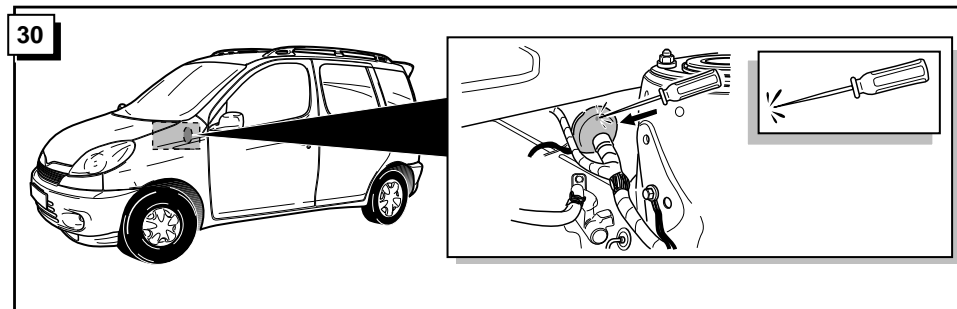
Anschluß Steckdose / Connection de la prise / Socket connection / Contactdoos aansluiting

DIN/ISO 11446		(D)	(F)	(GB)	(NL)
	1/L	gelb	jaune	yellow	geel
	2	blau	bleu	blue	blauw
	2a	grau	gris	grey	grijs
	1-8	weiß	blanc	white	wit
	4/R	grün	vert	green	groen
	5/58-R	braun	marron	brown	bruin
	6/54	rot	rouge	red	rood
	7/58-L	schwarz	noir	black	zwart
	8	schwarz/rot	noir/rouge	black/red	zwart/rood
	9	braun/weiß	marron/blanc	brown/white	bruin/wit
	10	rot	rouge	red	rood
	11	weiß	blanc	white	wit
	13	weiß	blanc	white	wit

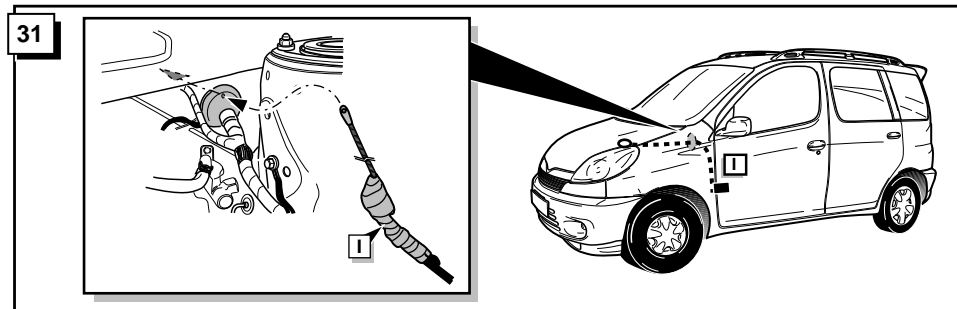
29



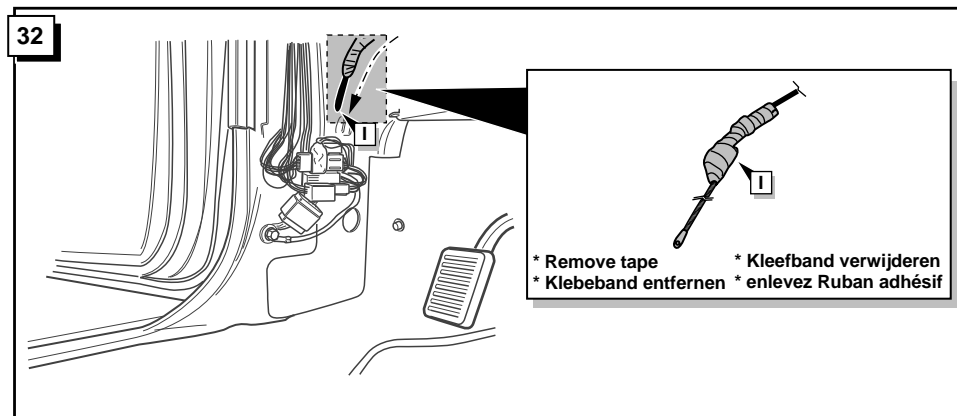
30



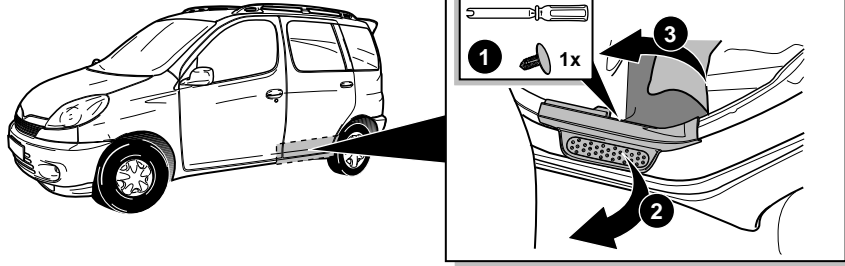
31



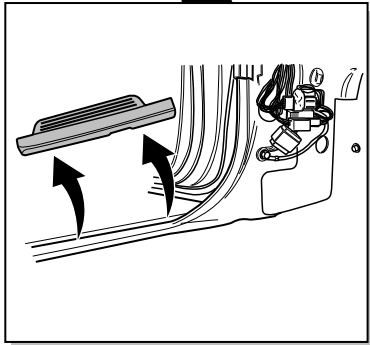
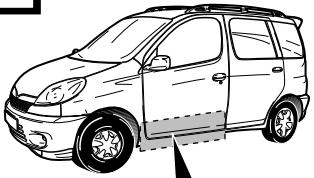
32



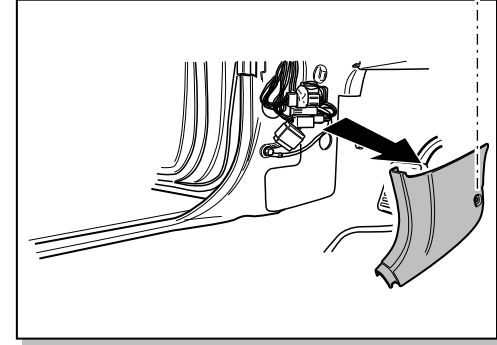
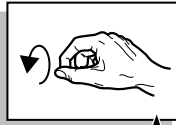
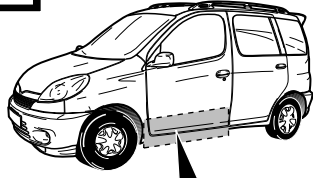
25



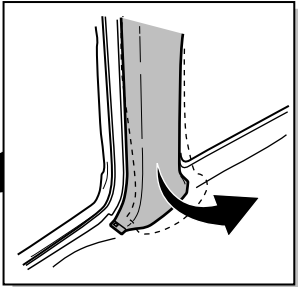
26



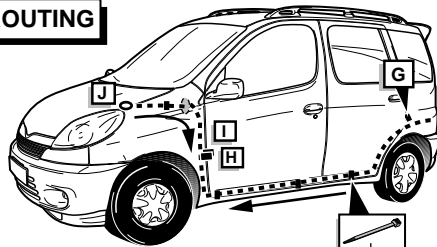
27



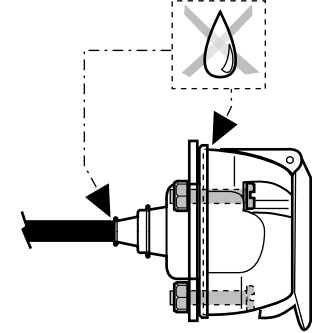
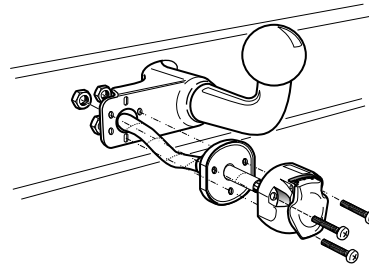
28



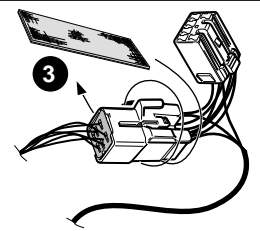
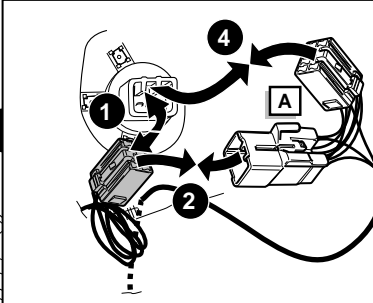
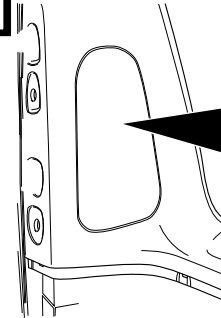
ROUTING



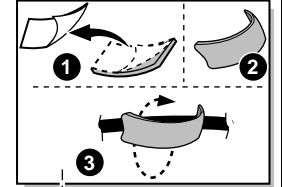
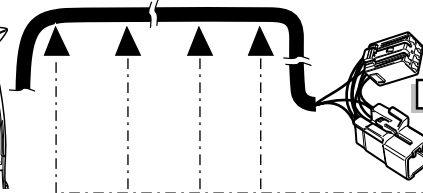
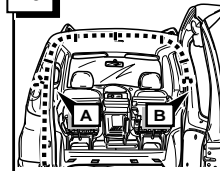
14



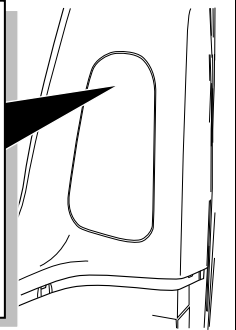
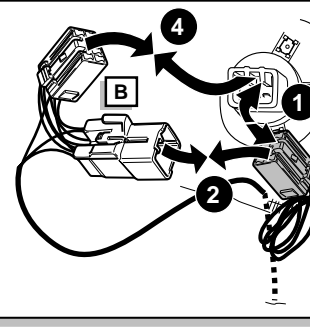
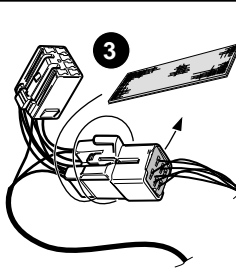
15



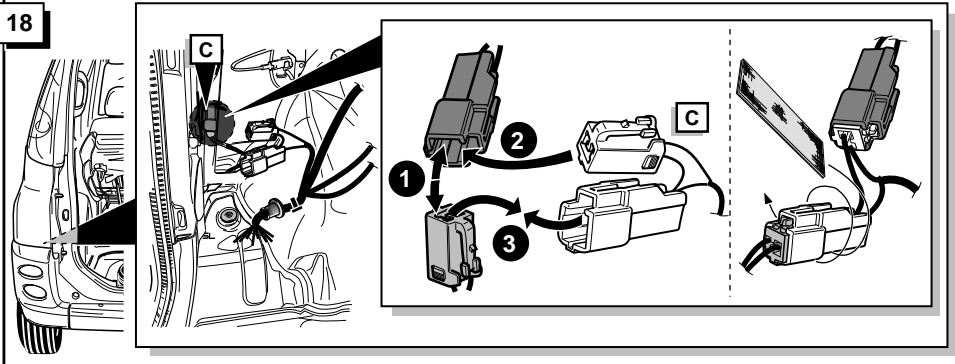
16



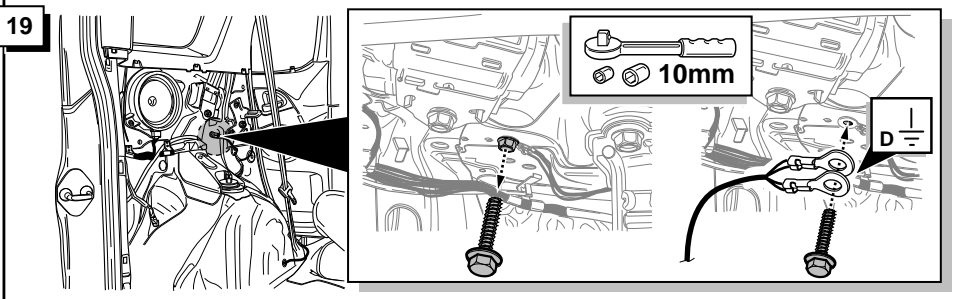
17



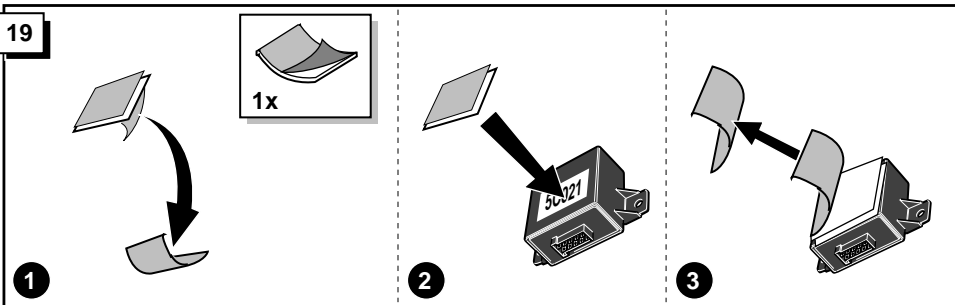
18



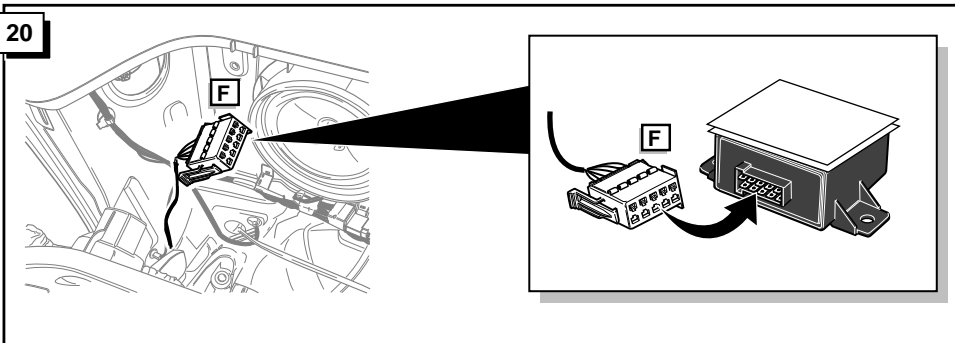
19



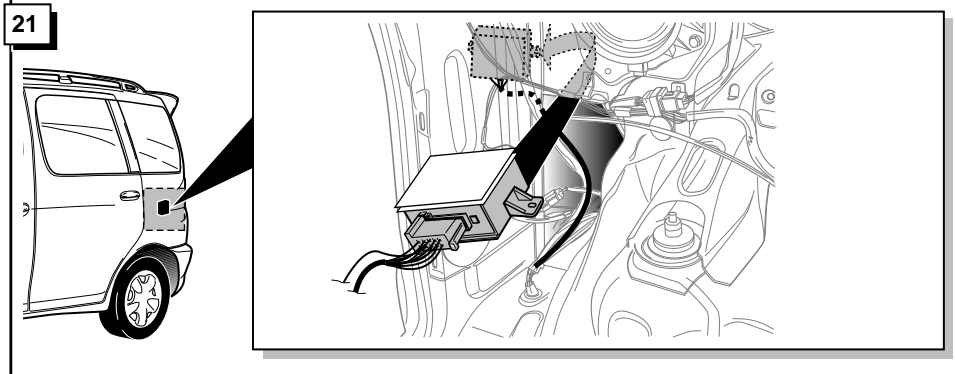
19



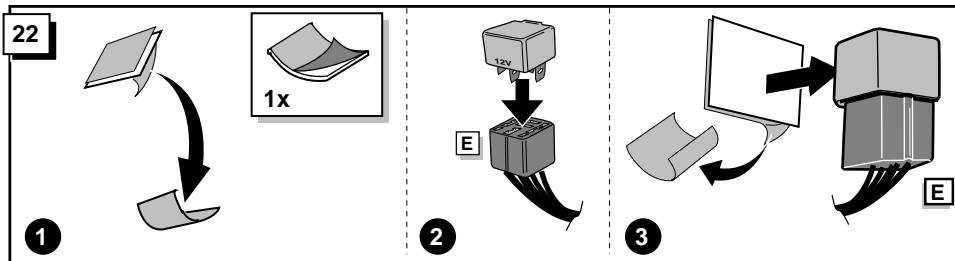
20



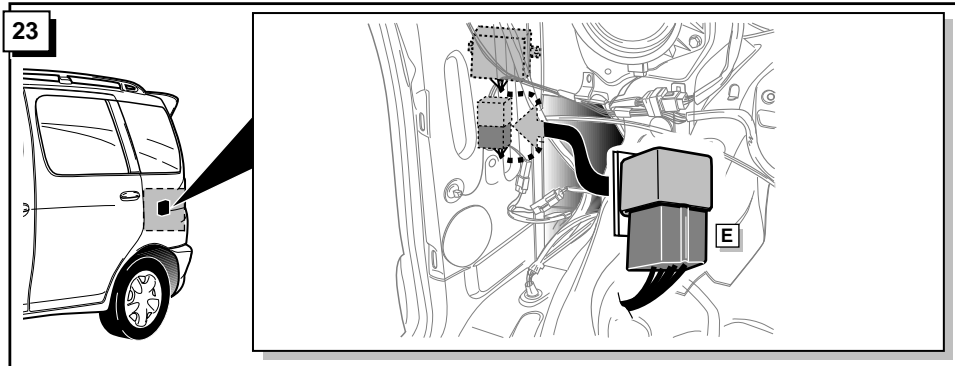
21



22



23



24

