

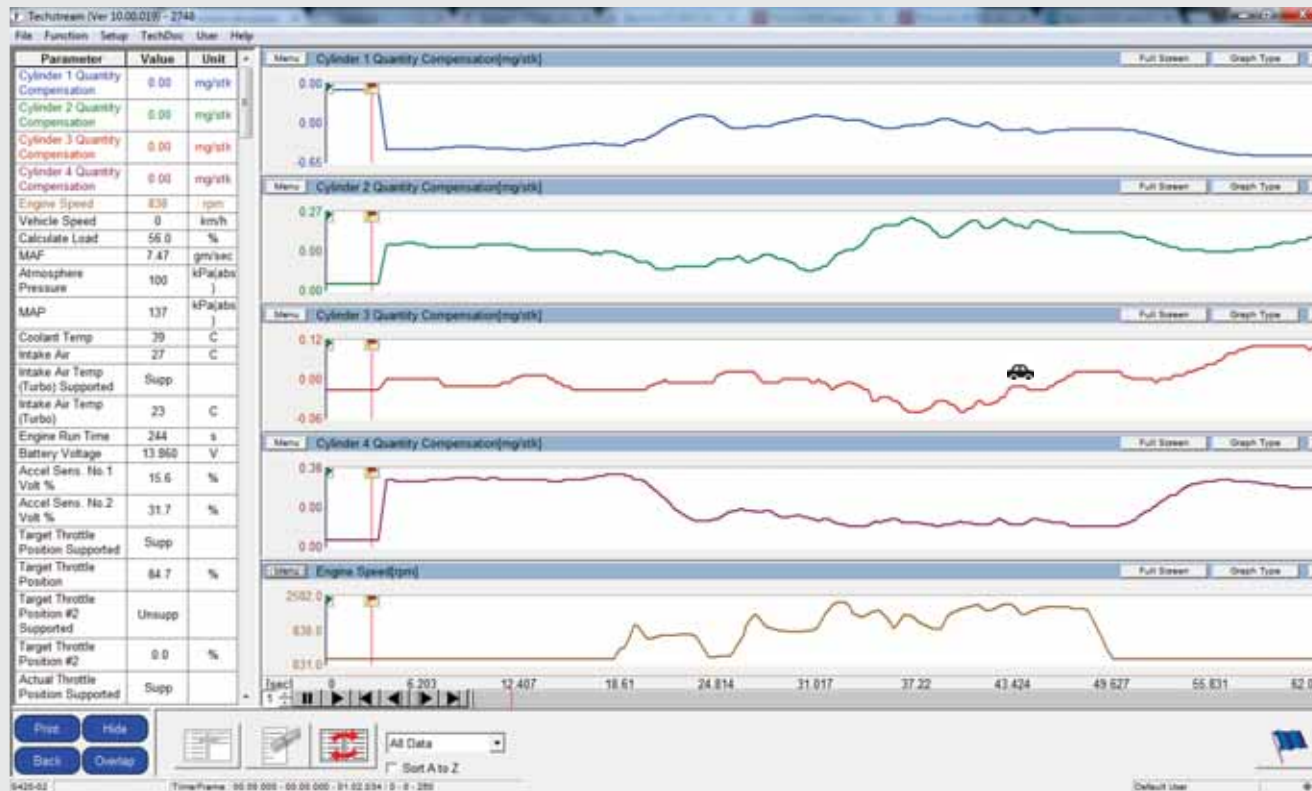


Snapshot Library

Introduction Guide



First: What is a Snapshot?



Snapshot: a GTS recording taken from a goodknown vehicle



Purpose

Diagnostic Support:

Provide good reference values for comparing with vehicle measured parameters

TD1 Access Point



TOYOTA ALWAYS A BETTER WAY

Home GENERAL OWNER **REPAIR** ENVIRONMENT SAFETY EUROS

Select Language
English

LOGIN
Select User ID
Select Password
SUBMIT

FORGOT YOUR PASSWORD
REGISTRATION

Before you start...
Online Subscriptions
What's new
Frequently Asked Questions
User Survey
Contact
Lexus Publications
Disclaimer
Legal notice
E-mail notification service

Current Users: 1
2.1.1.0

Welcome to **Toyota-tech**, your
Toyota service and repair information

FREE Access
Accessory Installation Manuals
Homologation Documents
National Technical Hotlines
Special Service Tools List
Find your modelcode
Campaign Information
Body Conversion Guides
Paint
Tyre information

PAYABLE Access
New Car Features
Repair Manuals
Electrical Wiring Diagram
Body repair
Service Data Sheet
Technical Service Bulletin
Maintenance Schedules
Wire Harness Repair Manual
Correction bulletins
Electronic Parts Catalogue
Windscreen Repair
HDD Map Update Tool Operation manual
Diesel Injector Seat Cleaning Kit
Flat Rate Times
Brake diagnosis
Diagnostic tools
ProAce parts
Touch & Go Diagnostic Information
ECU Software updates
Diagnostic snapshot library

Diagnostic snapshot library



How to find the correct recording?

Simple: Select your vehicle type and click Search



The screenshot illustrates the search process in four steps:

- Step 1:** Select a vehicle model from the 'Model' list. The 'Auris' model is highlighted with a red circle and a hand icon labeled '1'.
- Step 2:** Select a basic model code from the 'Basic model code' list. The 'ADE106' code is highlighted with a red circle and a hand icon labeled '2'.
- Step 3:** Select an engine type from the 'Engine' list. The '1AD-FTV' engine is highlighted with a red circle and a hand icon labeled '3'.
- Step 4:** Click the 'Search' button, which is highlighted with a red circle and a hand icon labeled '4'.

The final result shows the selected metadata: Auris, ADE106, 1AD-FTV, and Diagnostic Snapshot Library.

Consult the result obtained based on your search criterias

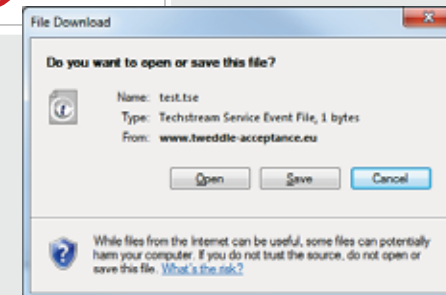
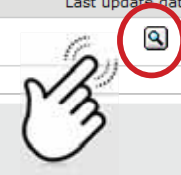


Filter Results

VIN: Search criteria : Auris, ADE186, DSL

Your search delivered 1 results.

reference number	Last update date : 18/12/2014
description	ADE186



Click **Open** for instant consultation or **Save** if you need to consult the file later

Open the file in GTS and Set up the graph



The screenshot shows the GTS software interface. A 'GRAPH SETUP (5320-04)' dialog box is open, with the 'SCALE (Affects this graph)' section highlighted by a red box and a red circle with the number '1'. The 'SCALE' section has 'Auto-ranging' checked and 'Manual-ranging' unchecked. The 'Minimum' is set to 25100.0 and the 'Maximum' is set to 62250.0. The 'Apply to all graphs' checkbox is also checked. A 'Compare File' option in a 'File' menu is highlighted by a red box and a red circle with the number '2'. A hand cursor is pointing at the 'Compare File' option.

Load your own recording for side by side comparison **3**

The screenshot shows the 'Event File Dialog (5300-01)' window. The 'Look in:' field is set to 'Desktop'. A list of files is shown, including 'VERSO_1WW_JM1TD026R084821_07...'. The 'File name' field contains 'VERSO_1WW_JM1TD026R084821_07...'. The 'File Type' is set to 'Event Files (*.TSE)'. The 'LOAD' button is highlighted by a hand cursor.



Final Result:



Thank You.



TOYOTA MOTOR EUROPE NV/SA

TOYOTA