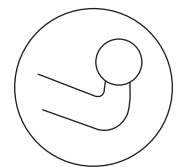
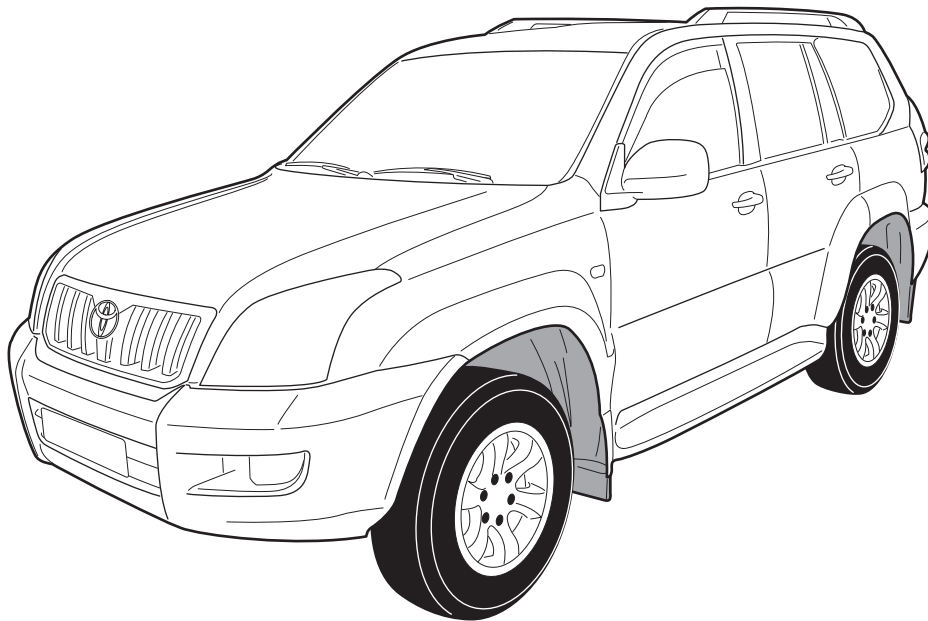



LAND CRUISER



- | | |
|----------------------------------|-------------------------|
| (GB) Fitting instruction for | : Wiring harness |
| (D) Einbauanleitung für | : Elektrosatz |
| (F) Instructions de montage pour | : Faisceau |
| (NL) Inbouwhandleiding voor | : Bekabeling |

Part number : **PZ457-J9560-60**

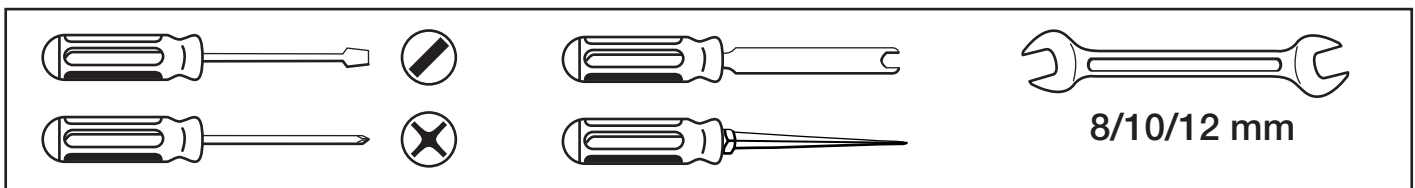
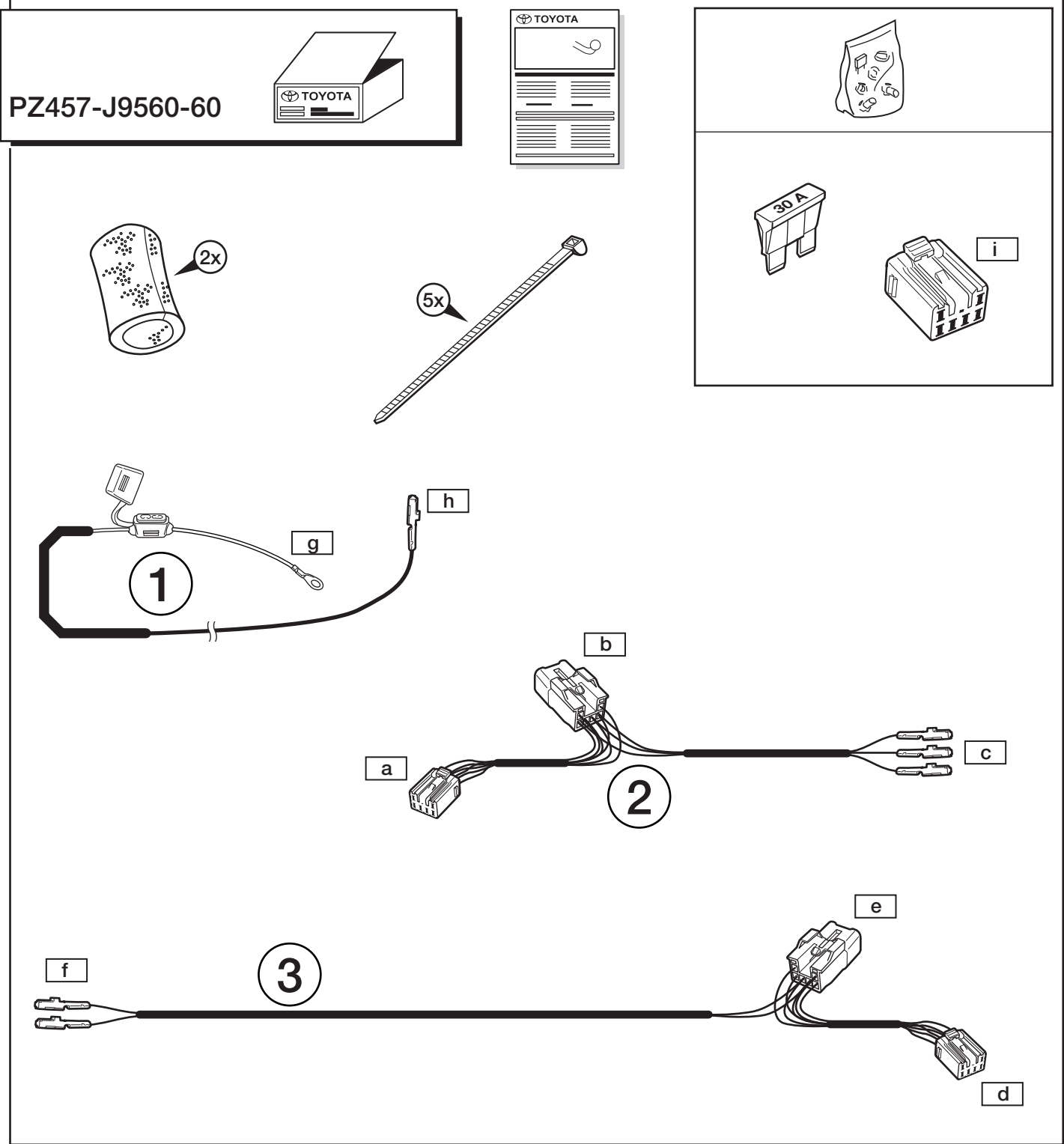
Application:

Model name	Model year	Body	Model codes
LAND CRUISER	09/2002 →	3/5 	**J12**-G* * * *W

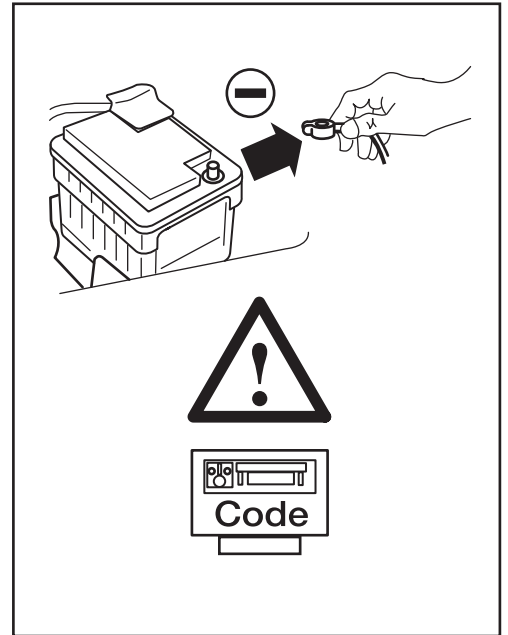
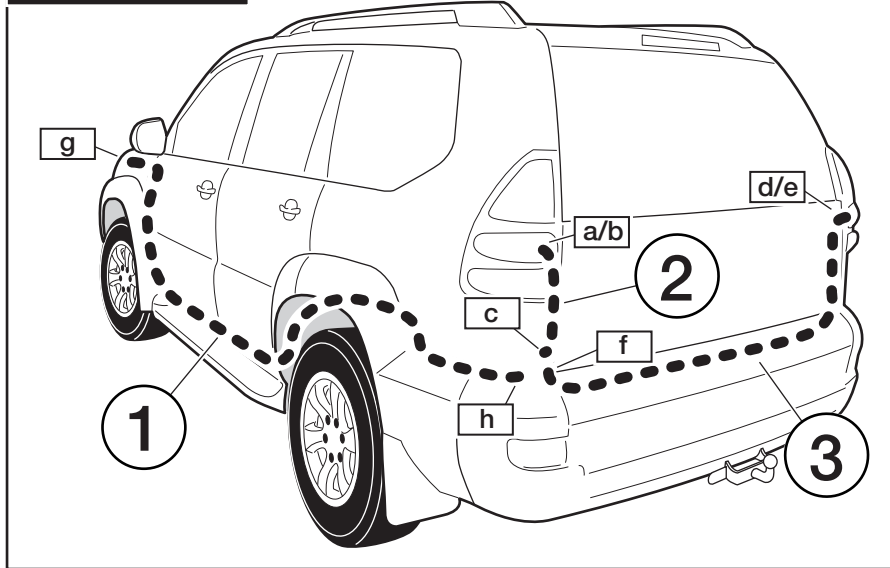
Note:

- | | |
|---|--|
| <p>(GB) Read this mounting manual carefully, before you start the installation. Warranty is granted only when installation is done by your Toyota dealer. Modification related to design, construction, illustrations and text are reserved.</p> | <p>(F) Lisez cette notice de montage soigneusement avant l'installation. Une garantie est seulement délivrée si l'installation a été exécuté par un commerçant de Toyota. Sous réserve de modifications de projet, construction, illustrations et texte.</p> |
| <p>(D) Bitte sehen Sie diese Einbauanleitung gründlich durch, bevor Sie mit der Montage anfangen. Garantie wird nur gewährt, wenn der Einbau von einem Toyota Händler ausgeführt worden ist. Änderungen hinsichtlich Ausstattung, Konstruktion, Abbildungen und Text vorbehalten.</p> | <p>(NL) Lees deze montagehandleiding door alvorens U tot installatie overgaat. Garantie wordt alleen verleend indien de installatie is uitgevoerd door een erkende Toyota handelaar. Veranderingen ten aanzien van ontwerp, constructie, afbeelding en tekst voorbehouden.</p> |

Part number PZ457-J9560-60	Issue 01	Date 02.01.2003	 TOYOTA	Page 1/8
-------------------------------	-------------	--------------------	--	-------------



ROUTING



INFO

PZ457-J9561-00



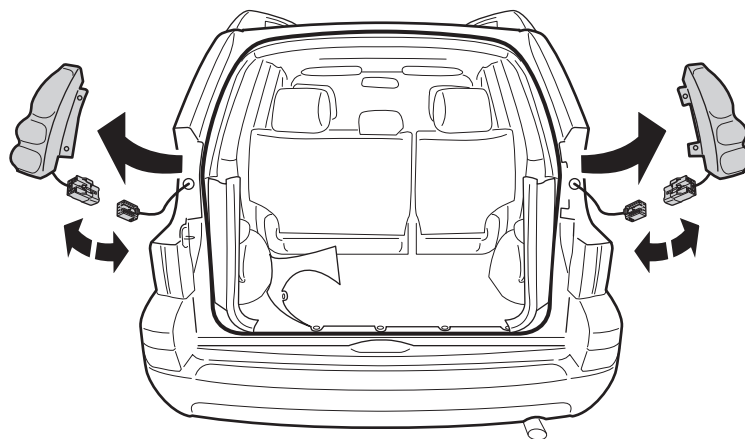
PZ457-J9564-00

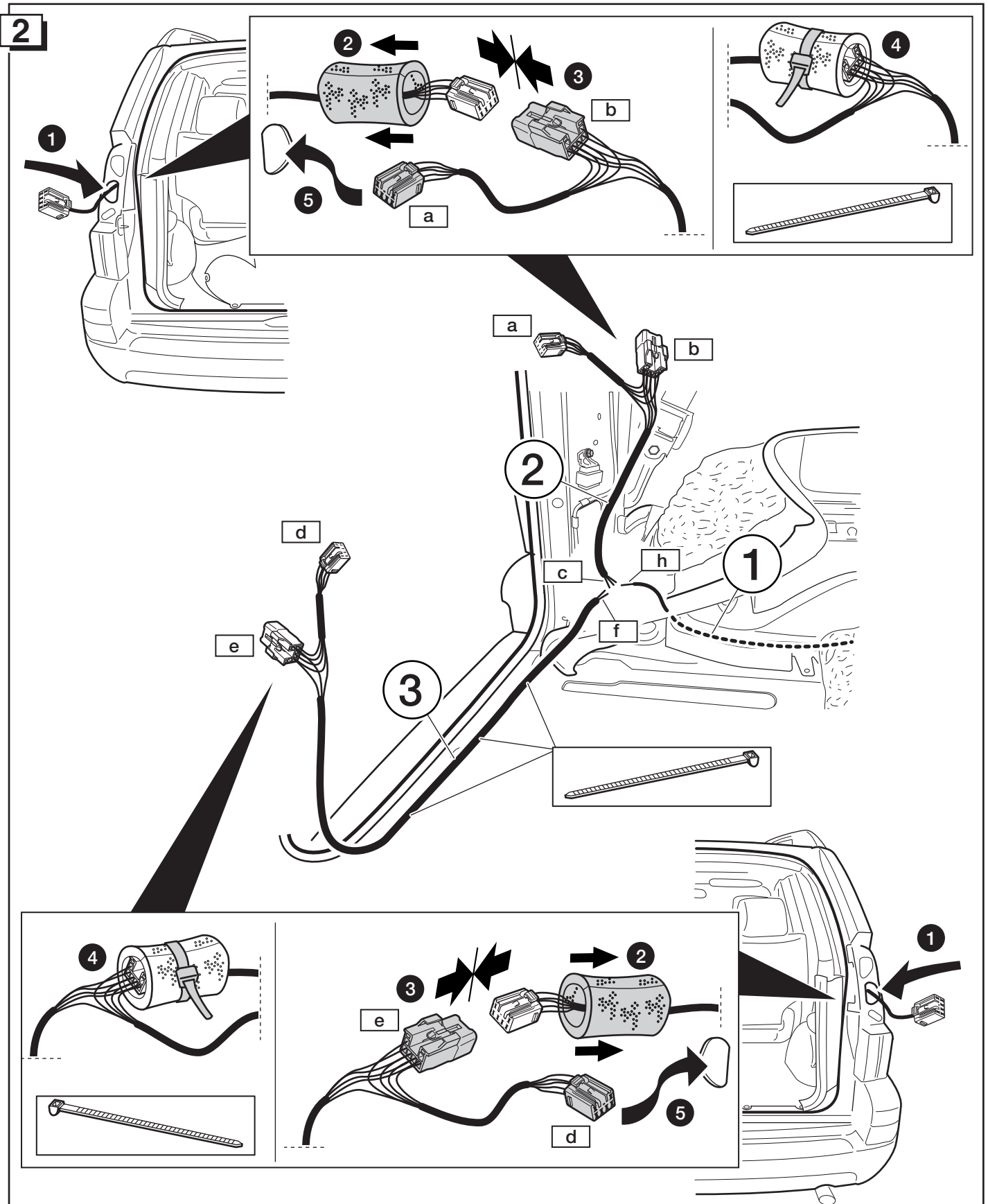
PZ457-J9560-00

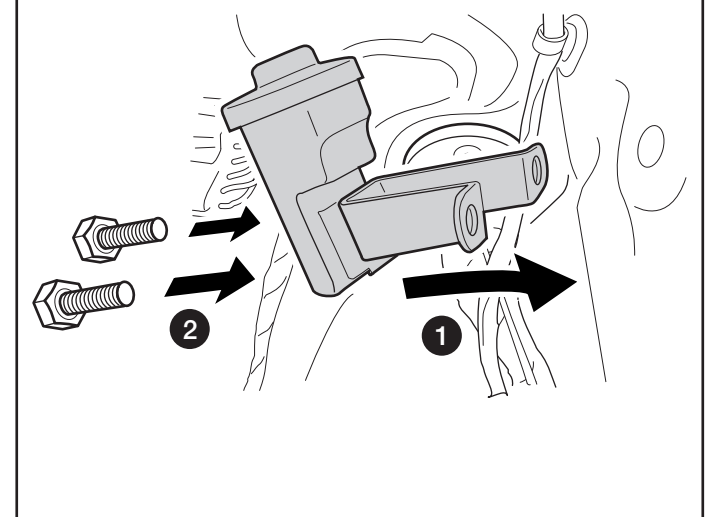
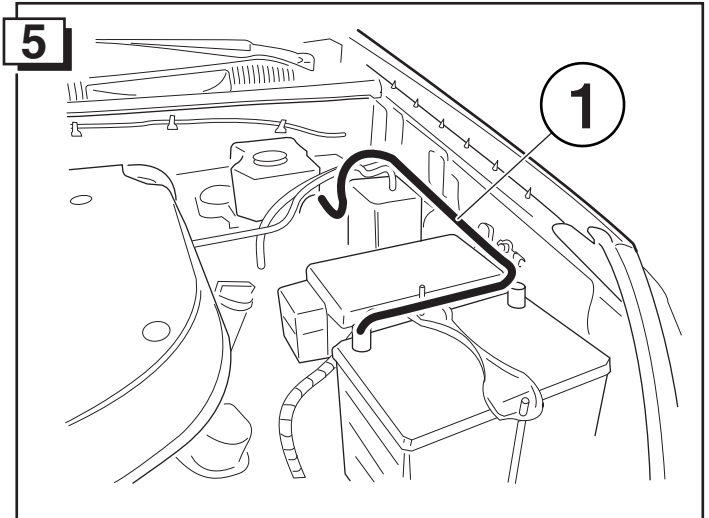
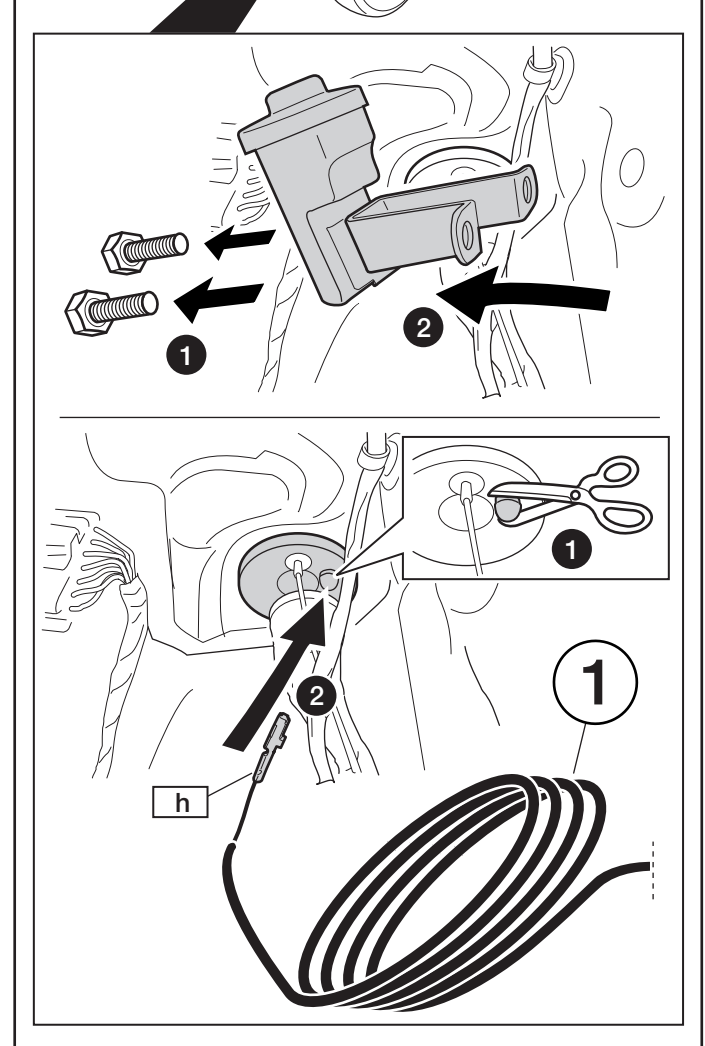
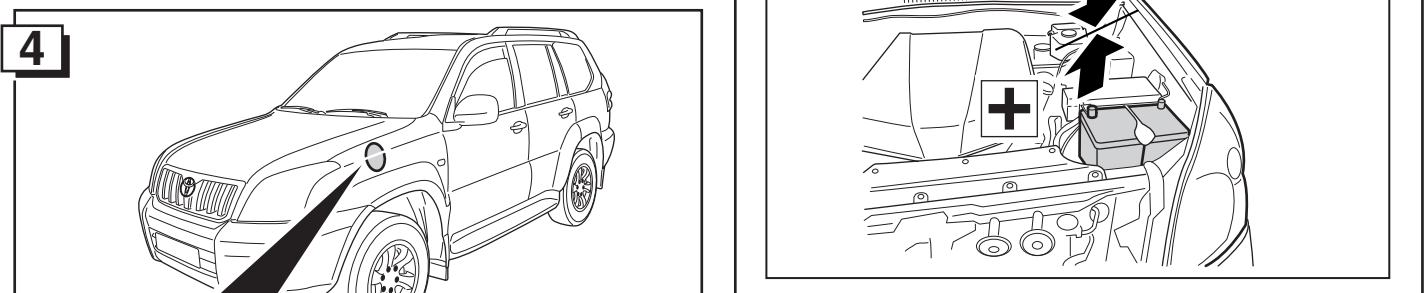
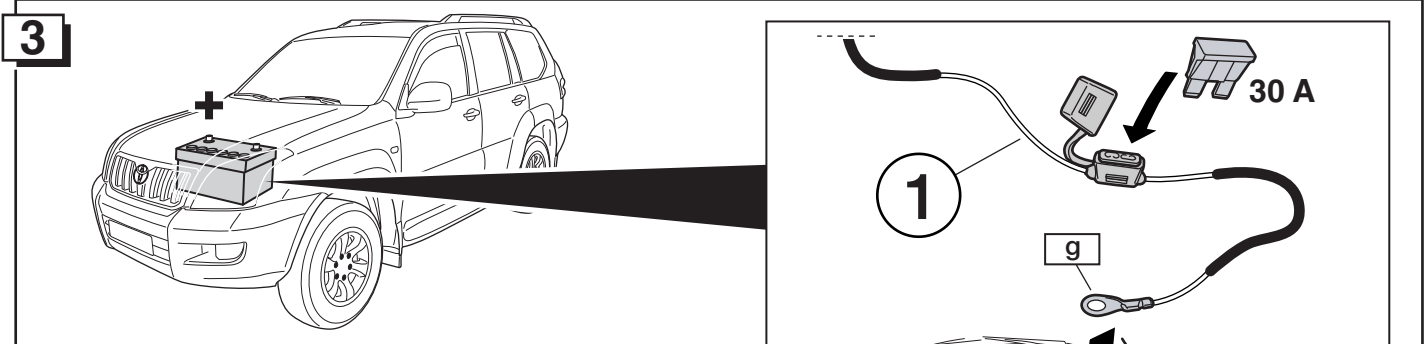


PZ457-J9563-00

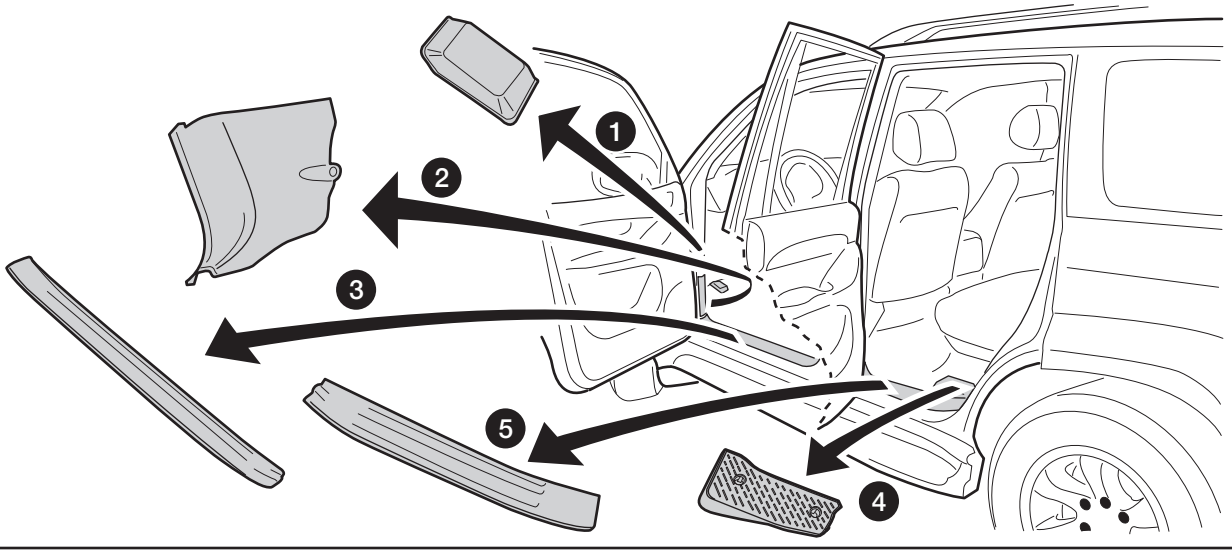
1



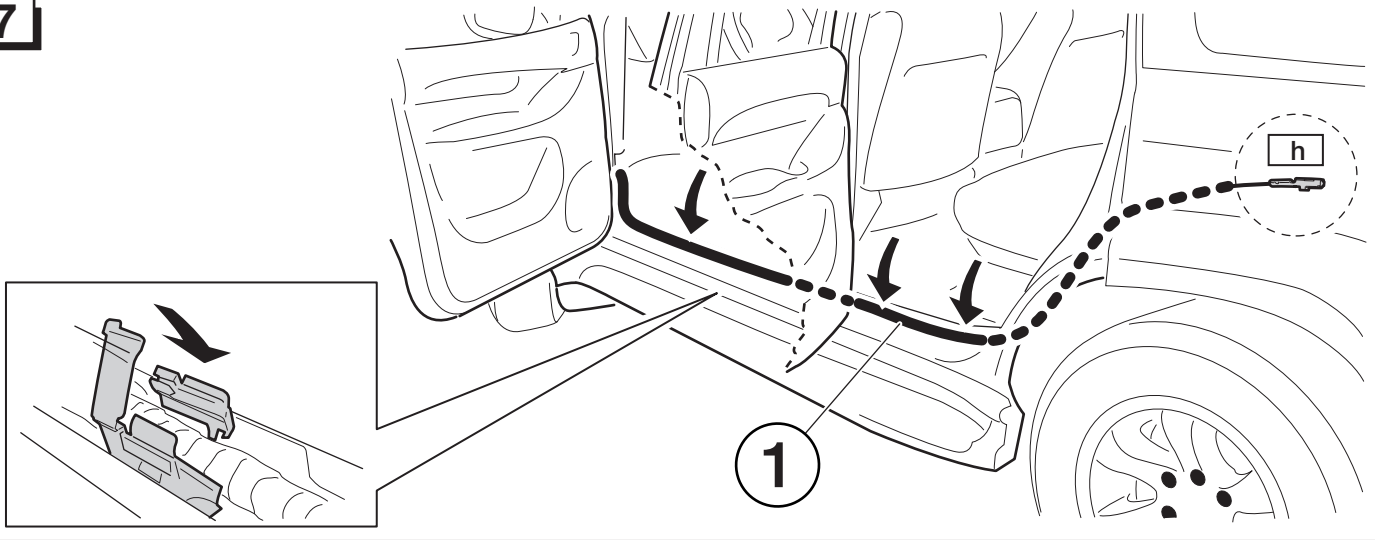




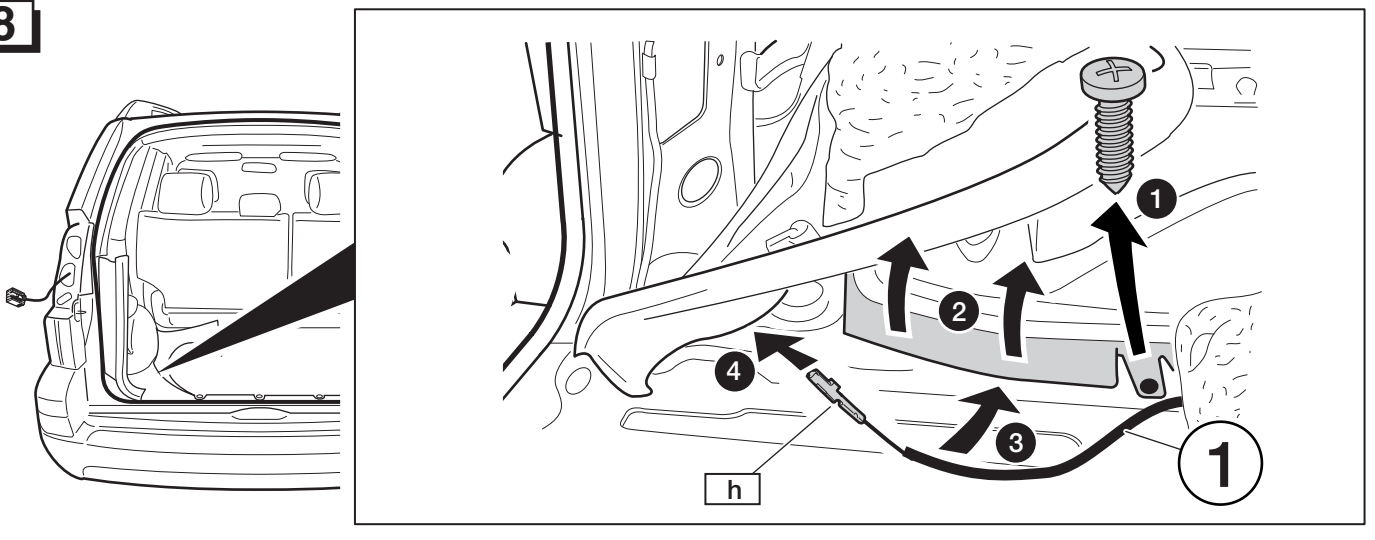
6



7



8



INFO

9 **PZ457-J9561-00**
PZ457-J9564-00

Rouge
Rot
Red
Rood

h

1

2

3

10 **PZ457-J9560-00**
PZ457-J9563-00

h

f

c

1

2

3

Rouge
Rot
Red
Rood

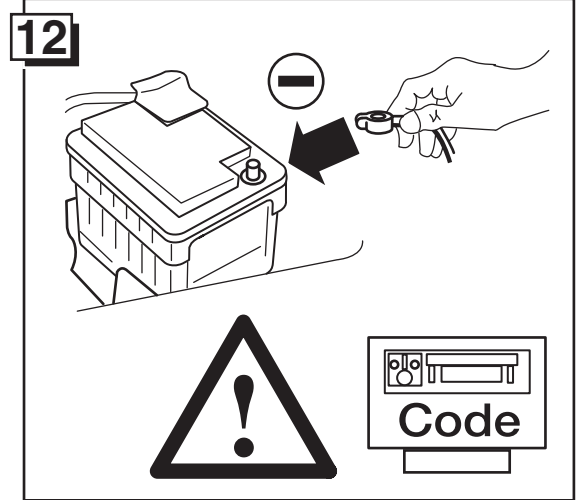
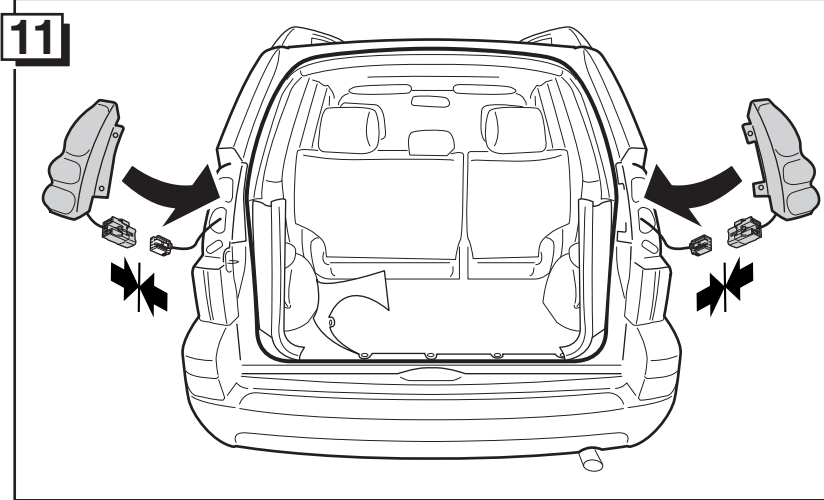
Gris/Rouge
Grau/Rot
Grey/Red
Grijs/Rood

Vert
Grün
Green
Groen

Jaune
Gelb
Yellow
Geel

Bleu/Rouge
Blau/Rot
Blue/Red
Blauw/Rood

Noir/Jaune
Schwarz/Gelb
Black/Yellow
Zwart/Geel



13

!

**CHECK FUNCTIONS !
FUNKTIONEN KONTROLLIEREN !
CONTRÔLER LES FONCTIONS !
CONTROLEER FUNCTIES !**